

# Annual Mortality Report 2004



Malta National Mortality Registry  
Department of Health Information  
July 2006

## Preface

The aim of the Malta National Mortality Registry is to collect, store and analyse data about mortality in the Maltese Islands. This data is needed in the planning of health policies as well as evaluation of the effectiveness of health care plans. Mortality data is also used in epidemiological studies and other research carried out by doctors, students and other health care professionals. Information is also provided to the National Statistics Office of Malta as well as to the World Health Organisation, Eurostat and the European Monitoring Centre for Drugs and Drug Addiction (EMCDDA).

## Acknowledgements

The Annual Mortality Report for the year 2004 was only possible through the hard work and co-operation of members of staff of the Department of Health Information. Special thanks goes to Mrs. Connie Scicluna and Mrs. Josephine Farrugia , the nurses working in the Mortality Registry; as well as the staff working on the other registries in the department.

Close collaboration with certifying doctors, pathologists, public health doctors and statistics office of police were vital to the formation of death register whose aim is of always improving accuracy and timeliness. Special thanks goes to Dr. Bridget Ellul who is always ready and enthusiastic to help.

Thanks are also due to Dr. Renzo Pace Ascjak and all doctors working at the Department of Health Information for their patience and support.

Dr. Kathleen England  
Medical Officer  
Malta National Mortality Registry

Address: Department of Health Information  
95, Guardamangia Hill, Guardamangia, Malta, MSD 08  
Tel : (+356) 25599000  
Fax: (+356) 21235910  
e-mail: [kathleen.grima@gov.mt](mailto:kathleen.grima@gov.mt)

## Contents

<b>Introduction and Definitions</b>	<b>VII</b>
<b>Section 1: Overview</b>	<b>1</b>
Distribution by gender and age group	2
Distribution by marital status and gender	3
Distribution by type of place of death	4
Distribution by month of death	5
Causes of death	6
Leading causes of death by gender	8
Leading causes of death by age group	10
Potential years of life lost	12
<b>Section 2: Individual Diseases</b>	<b>14</b>
Diseases of the circulatory system	14
Neoplasms	17
Diseases of the respiratory system	22
Diseases of the digestive system	25
Diabetes mellitus	26
Infectious and parasitic diseases	27
External causes of mortality	28
<b>Section 3: Perinatal and Infant Mortality</b>	<b>31</b>

<b>Section 4: Deaths in Non-Residents</b>	<b>33</b>
<b>Section 5: Statistical Tables</b>	<b>35</b>
Age standardised death rate by gender and cause	35
Deaths by specific cause, age group and gender	40
Deaths in non residents by cause, age group and gender	61

## List of Tables

Table 1- Number of deaths and % by type of place of death	4
Table 2- Leading causes of death by number, rate and percent	7
Table 3- Commonest causes of death in the 15-44 year age group	10
Table 4- Commonest causes of death in the 45-64 year age group	11
Table 5- Commonest causes of death in the 65-84 year age group	11
Table 6- Commonest causes of death in the 85+ age group	12
Table 7- Potential years of life lost under 65 years	13
Table 8- Average age of death from diseases of the circulatory system	16
Table 9- Deaths due to cigarette smoking in males	23
Table 10- Deaths due to cigarette smoking in females	24
Table 11- Deaths from infectious and parasitic diseases	27
Table 12- Foetal, neonatal and infant deaths	31
Table 13- Deaths in non-residents by country of residence	34
Table 14- Age-standardised death rate by gender and cause	35
Table 15- Deaths by specific cause, age group and gender	40
Table 16- Deaths in non-residents by causes, age group and gender	61

## List of Figures

Figure 1- Standardised death rate (ESP)/100,000 pop in males & females 1990-2004	1
Figure 2- Age-specific mortality rates in males and females	2
Figure 3- Percentage of deaths in each gender by age group	2
Figure 4- Distribution of deaths by marital status & gender	3
Figure 5- Distribution of deaths by type of place of death	4
Figure 6- Distribution by month of death and gender	5
Figure 7- Distribution of deaths by month of death and age group	5
Figure 8- Commonest causes of death using broad categories	6
Figure 9- Percentage of leading causes of deaths in males	8
Figure 10- Percentage of leading causes of deaths in females	9
Figure 11- SDR, diseases of circulatory system, /100,000 1995-2004	14
Figure 12- Deaths due to ischaemic heart disease by age group and gender	15
Figure 13- Deaths due to cerebrovascular accidents by age group and gender	15
Figure 14- SDR, cerebrovascular diseases, all ages /100,000 over 10 years	16
Figure 15- Most common cancer deaths in both sexes	17
Figure 16: Standardised mortality rate (ESP), malignant neoplasms/100,000 pop	18
Figure 17- Most common cancer deaths in males	19
Figure 18- Most common cancer deaths in females	19
Figure 19- Deaths from cancer of trachea, bronchus & lung by age group & gender	20
Figure 20- Deaths due to neoplasm of colon, rectum and anus by age group & gender	20
Figure 21- Deaths due to breast, cervical, uterine & ovarian cancer by age group	21
Figure 22- Most common cancer deaths in 0-44 age group	21
Figure 23- Deaths due to respiratory infections by age group and gender	22

Figure 24- Standardised mortality rate (ESP), bronchitis/emphysema/asthma /100000	23
Figure 25- Deaths due to liver disease by age group and gender	25
Figure 26- Standardised mortality rate (ESP), chronic liver disease & cirrhosis/100000	25
Figure 27- Standardised mortality rate (ESP), Diabetes/100,000	26
Figure 28- Number of deaths due to external causes	28
Figure 29- Standardised mortality rate (ESP), Transport accidents/100,000	28
Figure 30- Deaths due to falls by gender and age group	29
Figure 31- Deaths due to suicide by age group and gender	30
Figure 32- Deaths due to drug overdose by gender and age group	30
Figure 33- Causes of death in non-residents	33
Figure 34- Deaths in non-residents by age group and gender	33
Figure 35- Deaths in non-residents (tourists) by month of death	34

## **Introduction**

The Annual Mortality Report 2004 presents mortality statistics for the year 2004 by cause of death for the Maltese Islands.

A copy of this report can be found on the Department of Health Information web site: [www.health.gov.mt/ministry/dhi/dhi.htm](http://www.health.gov.mt/ministry/dhi/dhi.htm)

## **Data Analysis**

The information used is based on details obtained from death certificates. This is supplemented by looking through the deceased patients' records, newspaper cuttings as well as discussion with pathologists, public health doctors, police and certifying doctors as well as information obtained from the other registries at the department of health information. These additional sources of information are needed for verification, adding detail and providing mortality data which is as reliable and as accurate as possible.

The International Statistical Classification of Diseases and Related Health Problems- ICD 10 has been used to translate diagnoses of diseases from words into alphanumeric codes in order to permit easier storage, retrieval and analysis of the data. This also allows comparison between different countries and over different periods of time.

## **Additional Sources of Data**

The National Statistics Office of Malta was the source from which information about mid-year population 2004 by age group and gender as well as the number of births and live births was obtained.

Number of births and live births with a birth weight of 1000g or more has been obtained from the National Obstetrics Information system (NOIS).

The European Health for All database- HFA-DB, (WHO Regional Office for Europe, Copenhagen, Denmark) has been used as a source of data for some of the figures in this report.

## **Quality of Mortality Data**

The 'Certificate of Death and Cause thereof' is filled in by the certifying doctor or in the case of autopsies by the pathologist. A variety of studies have looked at the quality of the information on death certificates and have found variations in the training habits and knowledge of the certifying doctors which will inevitably lead to the quality of data being



inconsistent. Moreover the data passes through a number of processes before becoming usable for analysis. Throughout these steps a number of errors occur which may undermine the quality of the data produced. A number of validation processes and quality checks are done by National Mortality Registry in order to produce data that is as accurate as possible. These include reviewing patients' files, discussion with certifying doctors as well as checking all data that has been entered. Training of doctors is an important aspect which needs to be looked at, however certain errors will still exist and validation processes at the registry are essential.

## Definitions

### Crude Death Rate

This is equal to the ratio of the number of deaths registered during the year and the estimated resident mid-yearly population of that year per 1000 (or 100,000). The mid-year population of 2004 has been used for this annual report.

Age groups	Total	Males	Females
0-4	20349.0	10374.5	9974.5
5-9	24059.5	12441.0	11618.5
10-14	27563.0	14174.0	13389.0
15-19	28456.5	14682.5	13774.0
20-24	30133.0	15450.0	14683.0
25-29	30126.0	15584.0	14542.0
30-34	26504.5	13548.5	12956.0
35-39	24498.5	12382.5	12116.0
40-44	28921.5	14575.5	14346.0
45-49	30066.5	15146.0	14920.5
50-54	29072.0	14565.5	14506.5
55-59	30339.0	14896.0	15443.0
60-64	18332.0	8750.0	9582.0
65-69	17343.5	7965.5	9378.0
70-74	13974.5	5885.0	8089.5
75-79	10371.0	4268.0	6103.0
80-84	6845.0	2647.0	4198.0
85+	4312.5	1504	2808.5
<b>Total</b>	<b>401267.5</b>	<b>198839.5</b>	<b>202428</b>

This table has been obtained by taking the average population (Maltese & foreign residents) of the years 2003, 2004 obtained from the Demographic Reviews 2003,2004 published by the National Statistics Office.

### Births

Total number of births weighing 500g or over at birth during 2004= 3902

Total number of live births weighing 500g or over at birth during 2004= 3887

Total number of births weighing 1000g or over at birth = 3892

Total number of live births weighing 1000g or over at birth = 3877

Sources : National Statistics Office, NOIS

### Age-Standardised Death Rate

The age-standardised death rate for a particular condition is that which would have occurred if the observed age-specific death rates for the condition had applied in a given standard population. The European Standard Population has been used in this report.

Age groups (years)	European standard population
0	1600
1-4	6400
5-9	7000
10-14	7000
15-19	7000
20-24	7000
25-29	7000
30-34	7000
35-39	7000
40-44	7000
45-49	7000
50-54	7000
55-59	6000
60-64	5000
65-69	4000
70-74	3000
75-79	2000
80-84	1000
85+	1000
<b>Total</b>	<b>100000</b>

### European Health For All Database

The European Health For All Database provides easy and rapid access to a wide range of basic health statistics for the 52 Member States of the WHO European Region. It was developed by the WHO Regional Office for Europe in the mid-1980s to support the monitoring of health trends in the region. This database has been used to produce a number of charts for the report comparing Malta with other European regions.

**The definitions described below are those presented in the International Statistical Classification of Diseases and Related Health Problems ICD-10 volume 2.**

### **Birth Weight**

The first weight of the fetus or newborn obtained after birth.

Low birth weight is less than 2500g (up to and including 2499g).

Very low birth weight is less than 1500g (up to and including 1499g).

Extremely low birth weight is less than 1000g (up to and including 999g)

### **Gestational Age**

The duration of gestation is measured from the first day of the last menstrual period. Gestational age is expressed in complete days or completed weeks.

For the purposes of calculation of gestational age from the date of the first day of the last normal menstrual period to the date of delivery, it should be borne in mind that the first day is day zero and not day one; days 0-6 therefore correspond to completed week zero;

### **Fetal Death**

Fetal death is the death prior to the complete expulsion or extraction from its mother of a product of conception, irrespective of the duration of the pregnancy; the death is indicated by the fact that after such separation, the fetus does not breathe or show any other evidence of life, such as beating of the heart, pulsation of the umbilical cord, or definite movement of voluntary muscles.

### **Fetal Death Rate**

The number of fetal deaths in a year expressed as a proportion of the total number of births (live births plus fetal deaths) in the same year. All fetuses with a birth weight of 500g and over are considered. Rates are usually expressed per 1000 total births.

$$\text{Fetal death rate} = \frac{\text{no. of fetal deaths in a year weighing 500g or more}}{\text{Number of live births plus fetal deaths in that year weighing 500g or more}} * 1000$$

$$\text{Fetal death rate (weight specific)} = \frac{\text{no. of fetal deaths in a year weighing 1000g or more}}{\text{Number of live births plus fetal deaths in that year weighing 1000g or more}} * 1000$$

### **Live Birth**

Live birth is the complete expulsion or extraction from its mother of a product of conception, irrespective of the duration of pregnancy, which, after separation, breathes or shows any evidence of life, such as beating of the heart, pulsation of the umbilical cord,

or definite movement of the voluntary muscles, whether or not the umbilical cord has been cut or the placenta is attached; each product of such a birth is considered live born.

### Neonatal Period

The neonatal period commences at birth and ends 28 completed days after birth. Neonatal deaths (deaths among live births during the first 28 completed days of life) may be subdivided into early neonatal deaths, occurring during the first seven days of life, and late neonatal deaths, occurring after the seventh day but before 28 completed days of life.

Age at death during the first day of life (day 0) should be recorded in units of completed minutes or hours of life. For the second (day 1), third (day 2) and through 27 completed days of life, age at death should be recorded in days.

### Neonatal Mortality Rate

The number of deaths during the neonatal period in that year expressed as a proportion of the total number of live births in the same year. Rates are expressed per 1000 live births.

$$\text{Neonatal mortality rate} = \frac{\text{no. of neonatal deaths in a year} * 1000}{\text{no. of live births in that year}}$$

$$\text{Neonatal mortality rate (weight specific)} = \frac{\text{no. of neonatal deaths in a year (1000g or over)} * 1000}{\text{no. of live births in that year (1000g or over)}}$$

### Perinatal Period

The perinatal period commences at 22 completed weeks (154 days) of gestation (the time when birth weight is normally 500g) and ends at seven completed days after birth.

### Perinatal Mortality Rate

The number of deaths during the perinatal period in a year expressed as a proportion of the total number of births (live births plus fetal deaths) in the same year.

$$\text{Perinatal mortality rate} = \frac{\text{no. of perinatal deaths in a year} * 1000}{\text{no. of live births plus fetal deaths in that year}}$$

$$\text{Perinatal mortality rate (weight specific)} = \frac{\text{no. of perinatal deaths in a year (weight 1000g or over)} * 1000}{\text{no. of live births plus fetal deaths in that year (weight 1000g or over)}}$$

### Infant Mortality Rate

The number of deaths in children less than 1 year of age in a year expressed as a proportion of the total live births in the same year. Rates are usually expressed per 1000 live births.

Infant mortality rate =  $\frac{\text{no. of infant deaths (under 1 year of age) in a year}}{\text{No. of live births in that year}} * 1000$

Infant mortality rate =  $\frac{\text{no. of infant deaths (under 1 year of age) in a year (weight 1000g or over)}}{\text{No. of live births in that year (weight over 1000g)}} * 1000$   
(weight specific)

### **Potential Years of Life Lost (PYLL)**

A measure of the relative impact of various diseases on society. PYLL highlights the loss to society as a result of youthful or early deaths. The figure for potential years of life lost due to a particular cause is the sum of the years of life lost due to that cause for all individuals dying before a particular age (65 years in the case of PYLL-65).

## Section 1: Overview

During the year 2004 there were 3072 deaths in the Maltese Islands. Of these 2999 were residents and 73 were non residents. These figures do not include 15 fetal deaths. There were 1491 male deaths and 1508 female deaths in residents, a decrease of 104 males and 61 females from the previous year.

The crude death rate for males was 750 deaths per 100,000 and for females 745 deaths per 100,000. The overall crude death rate was 747 per 100,000 population.

The age-standardised death rate (European Standard Population) for males was 753/100,000 and for females was 531/100,000. The overall age-standardised death rate was 628 per 100,000.

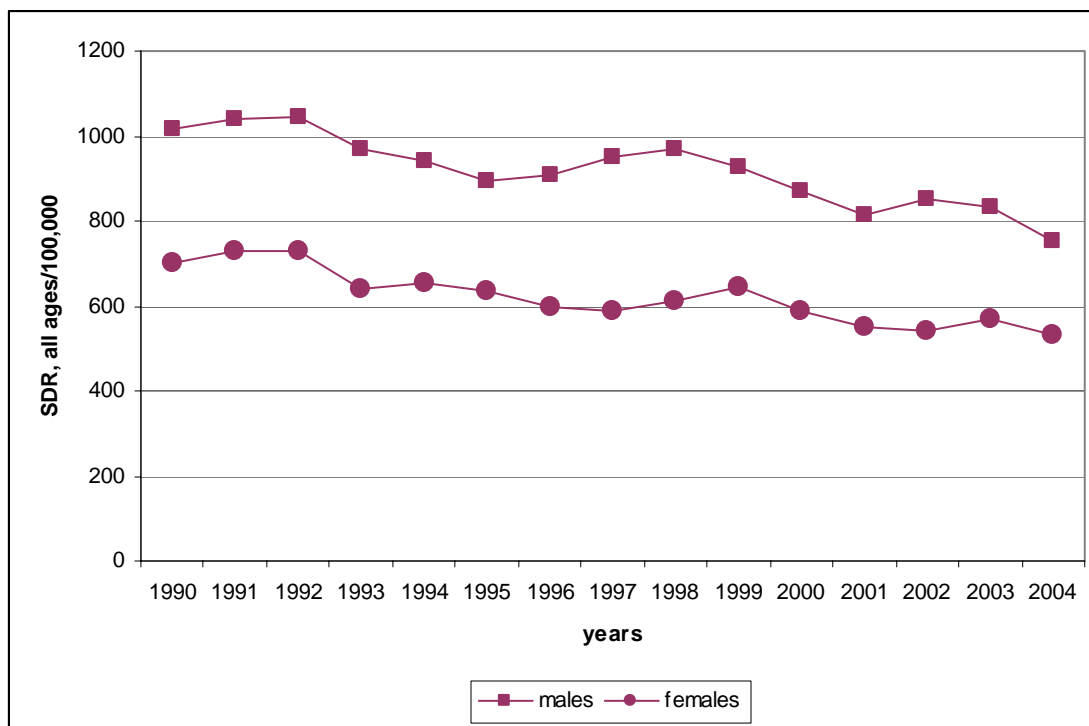


Figure 1: Standardised death rate (ESP) /100,000 population in males and females, 1990-2004 in Malta  
Source:WHO/Europe-Health for all database (HFA-DB)

- The overall death rate in Malta for males and females shows a downward trend.
- The life expectancy at birth for males was 76.6 and for females was 80.5
- The oldest male death was 99 years and the oldest female death was 106 years.

### Distribution by gender and age group

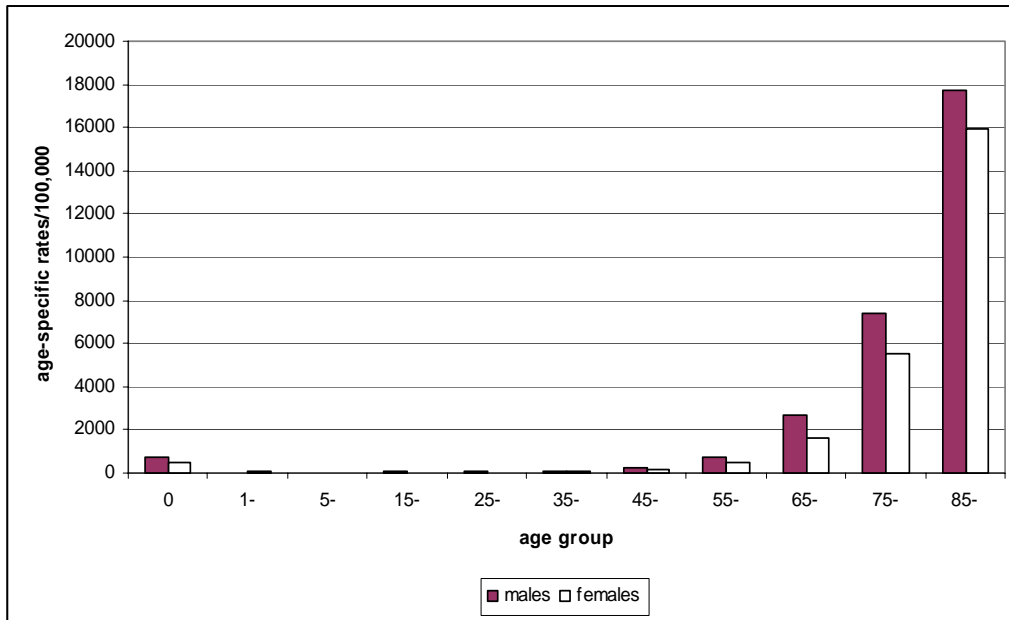


Figure 2: Age-specific mortality rates in males and females

After an initial rise in mortality in infants below the age of one year mortality rates increase with age.

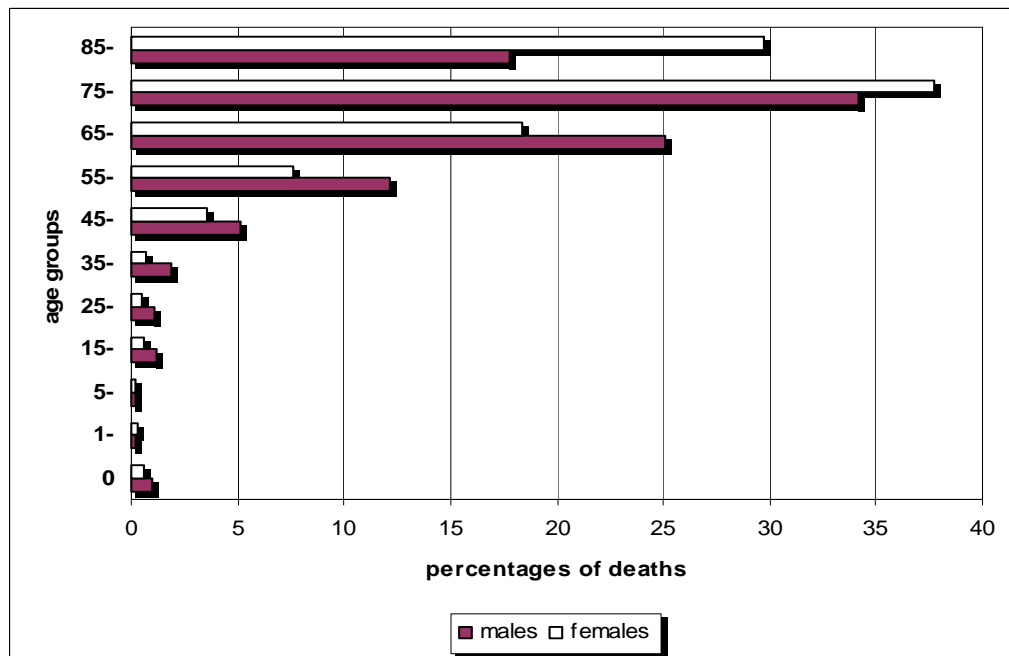


Figure 3: Percentages of death in each gender and age group

- The 75-84 age group accounts for the largest number of deaths in both sexes.
- In the 65-74 age group the % of male deaths is much larger than the % of female deaths.
- The opposite is true for the 85+ age group.
- The median age of death in males was 75 years and that in females was 79 years.

**Distribution by marital status and gender**

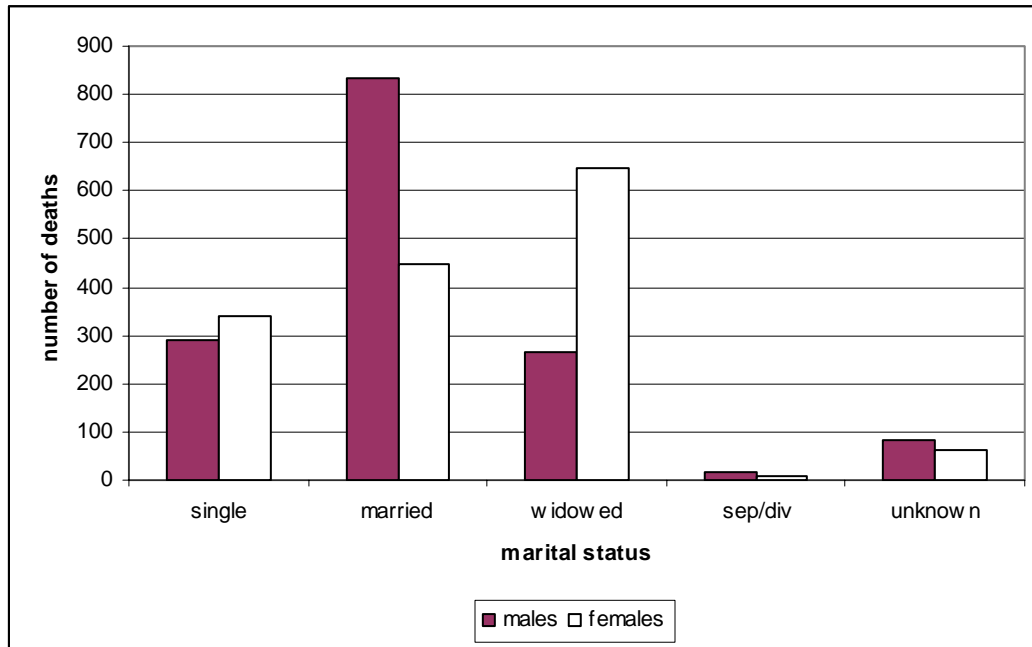


Figure 4: Distribution of deaths by marital status and gender

The overall number of deaths is greatest in the married category, as would be expected since the proportion of married persons in the population is greater than that of widowed or separated/divorced persons. However while in males the greatest number of deaths occurs in the married category, in females the greatest number of deaths occurs in the widowed category. This reflects the fact that more women outlive men and die as widows. It is interesting to note that in the 65+ age group 56% of all deaths occur in single, widowed or separated/divorced persons, compared to 39% occurring in married persons.



### Distribution by type of place of death

52% of all deaths occurred at St. Luke’s Hospital followed by 18% of deaths which occurred at usual residence of the deceased.

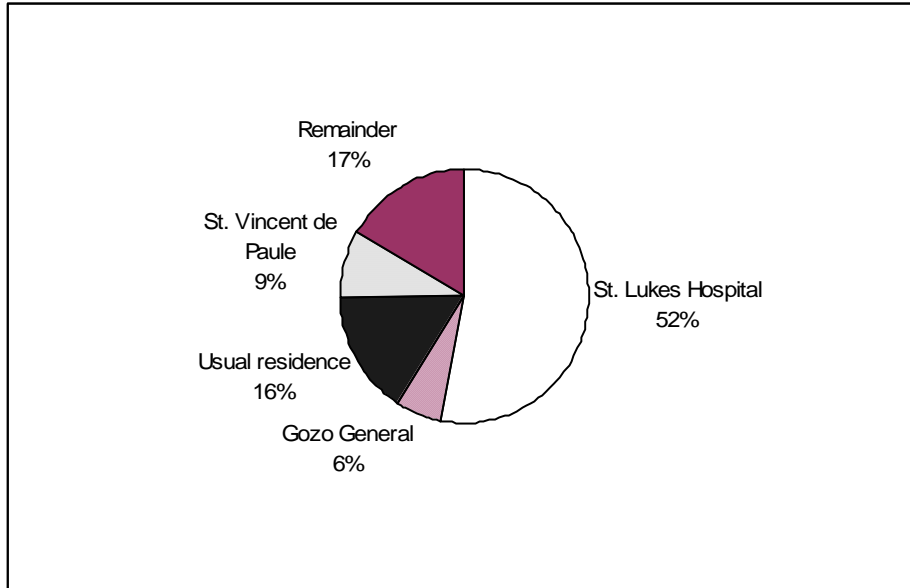


Figure 5: Distribution of deaths by type of place of death

Place of death	Number of death	% of total deaths
St. Lukes Hospital	1587	52.9
Usual residence	472	15.7
St. Vincent de Paule	259	8.6
Gozo General Hospital	184	6.1
Boffa Hospital	130	4.3
Other hospitals	112	3.7
Other homes	138	4.6
Other place of death	117	3.9
Total	2999	100

Table 1: Number of deaths and % by type of place of death

**Distribution by month of death**

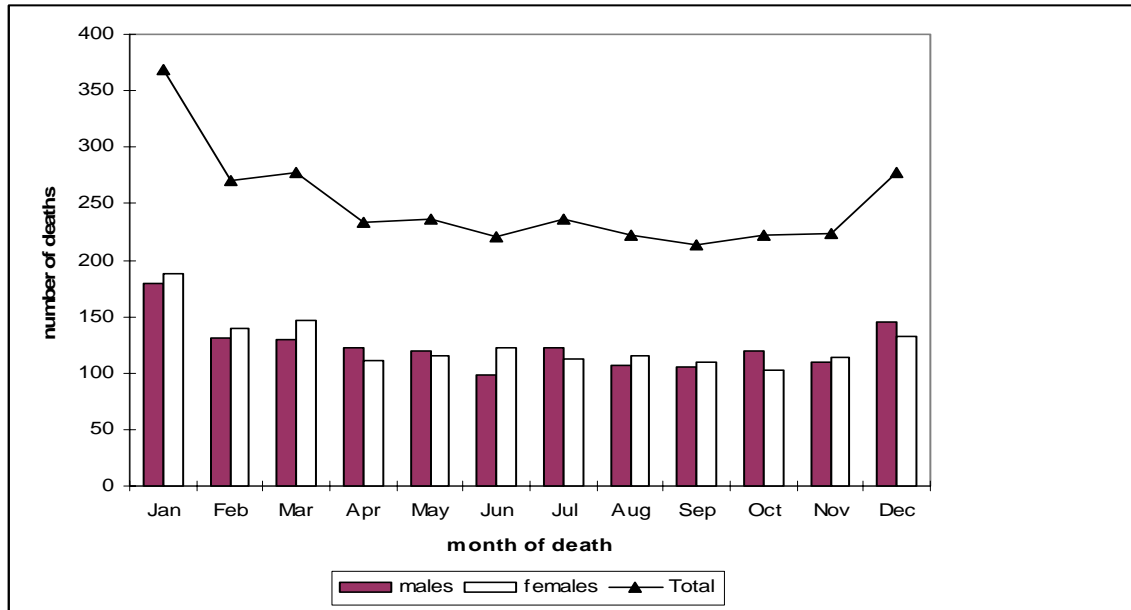


Figure 6: Distribution by month of death and gender

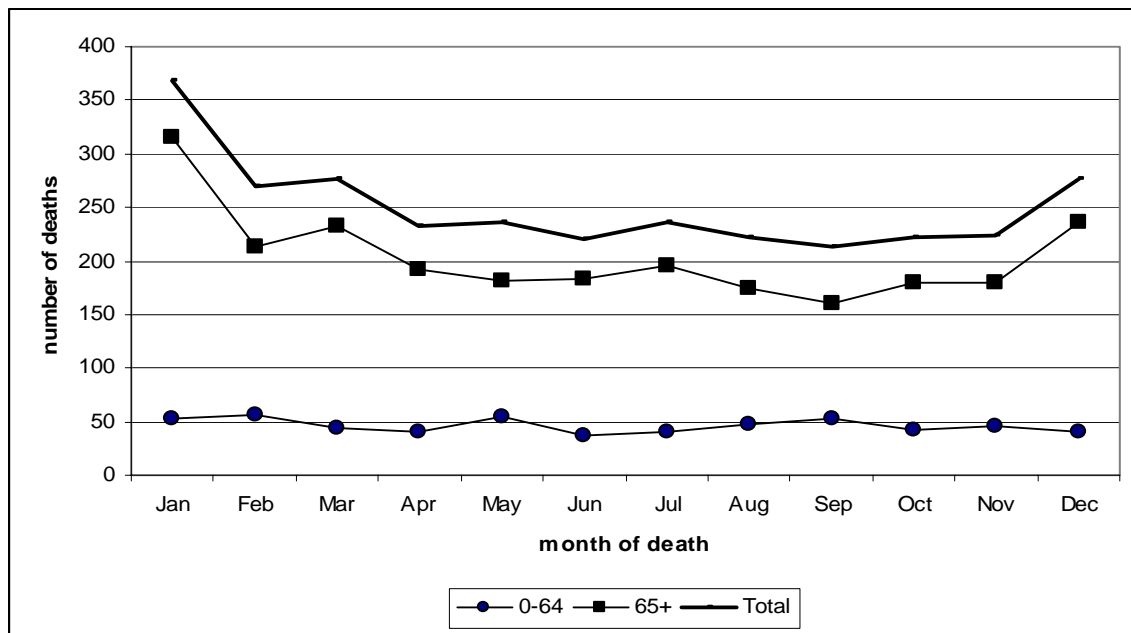


Figure 7: Distribution of deaths by month of death and age group

Figure 6 and 7 show the seasonal variation in the number of deaths which peak in the winter months. These peaks are more obvious in those aged 65+. Hypothermia and hyperthermia while often not the underlying cause of death contribute to death in frail old people.

## Cause of death

The main source of information as to the cause of death is obtained from the death certificate. Accuracy is increased by collaboration with certifying doctors, pathologists and police. The value of the mortality register depends on its level of accuracy and completeness.

The cause of death is often clearer in the younger and middle-aged persons than in the elderly because in the latter a number of diseases may contribute to cause the death of a person.

The International Statistical Classification of Diseases and Related Health Problems: ICD-10 is used to code the underlying cause of death. This is an international classification, which helps to increase comparability between different countries worldwide.

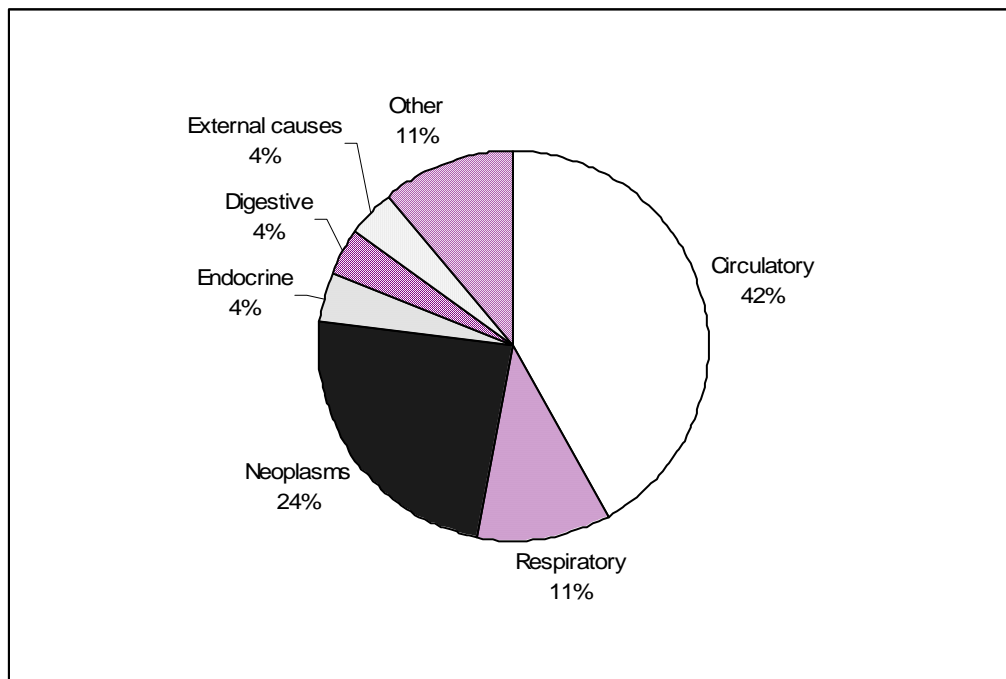


Figure 8: Commonest causes of death using broad categories

There were 1255 deaths due to diseases of the circulatory system, a decrease of 120 deaths from the year 2003. It is a leading cause of death accounting for 41.8% of all deaths. There was a slight decrease of 9 deaths due to neoplasms over the previous year.

### Leading causes of death: number, rate and percent

The Mortality Tabulation List 1 of the International Classification of Diseases ICD-10 is being used as the source of grouping of the diseases for the tables below. Lower respiratory tract infections (J12-J22) have been grouped together. Remainder categories have been excluded, as these tend to group several 'less common' conditions together and would give them undeserved importance, unless the number of deaths from an individual cause from this remainder category results is more than any group listed in the MTL list 1.

Cause of death & ICD-10 code	number of deaths			death rate*			% of total deaths
	Male	Female	Total	Male	Female	Persons	
All causes	1491	1508	2999	753	531	628	100
Ischaemic heart disease (I20-I25)	346	301	647	173	99	132	21.6
Cerebrovascular diseases (I60-I69)	138	196	334	68	65	67	11.1
Other heart diseases (I26-I51)	67	125	192	35	42	39	6.4
Acute lower respiratory infections (J12-J22)	81	91	172	46	31	36	5.7
Malignant neoplasm of trachea, bronchus & lung (C33-C34)	107	16	123	52	6	26	4.1
Diabetes mellitus (E10-E14)	54	60	114	27	21	23	3.8
Chronic lower respiratory diseases (J40-J47)	84	23	107	43	8	22	3.6
Malignant neoplasm of colon, rectum & anus (C18-C21)	38	41	79	18	16	17	2.6
Malignant neoplasms of ill-defined, secondary & unspecified site (C76-C80)	33	35	68	16	13	14	2.3
Malignant neoplasm of breast (C50)	1	61	62	0.6	24	14	2.1
All other causes	542	559	1101	274	206	238	36.7

\*standardised death rate/100,000 of the European Standard Population

Table 2: Leading causes of death by number, rate and percent

- Diseases of the circulatory system mainly ischaemic heart disease, cerebrovascular disease and heart failure rank as the most common causes of death.
- Lower respiratory infections are an important cause of death in the elderly.
- Diabetes mellitus is both a common cause of death as well as an important risk factor for circulatory diseases.
- Lung, colorectal and breast cancer are the most common causes of death due to malignancy.
- The male standardised death rate is higher than for females for most common causes of death.

### Leading causes of death in males

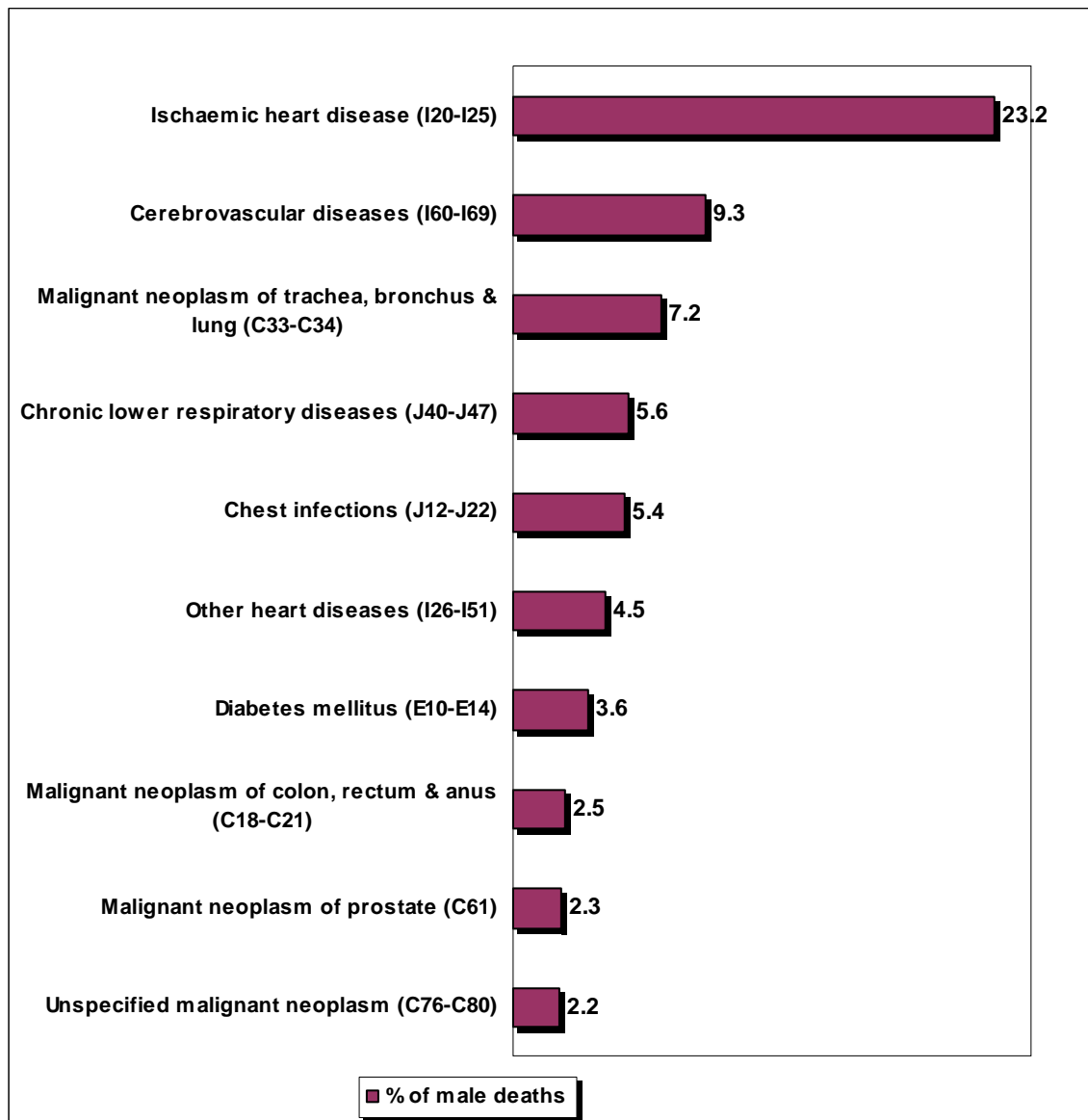


Figure 9: Percentages of leading causes of death in males

- The main cause of death in males is ischaemic heart disease responsible for 23% of all male deaths; this is followed by cerebrovascular diseases.
- Lung cancer followed by colon & prostate cancer are the commonest cancer killers in males.
- Chronic lower respiratory diseases often related to cigarette smoking are a much commoner killer in males than in females.

### Leading causes of death in females

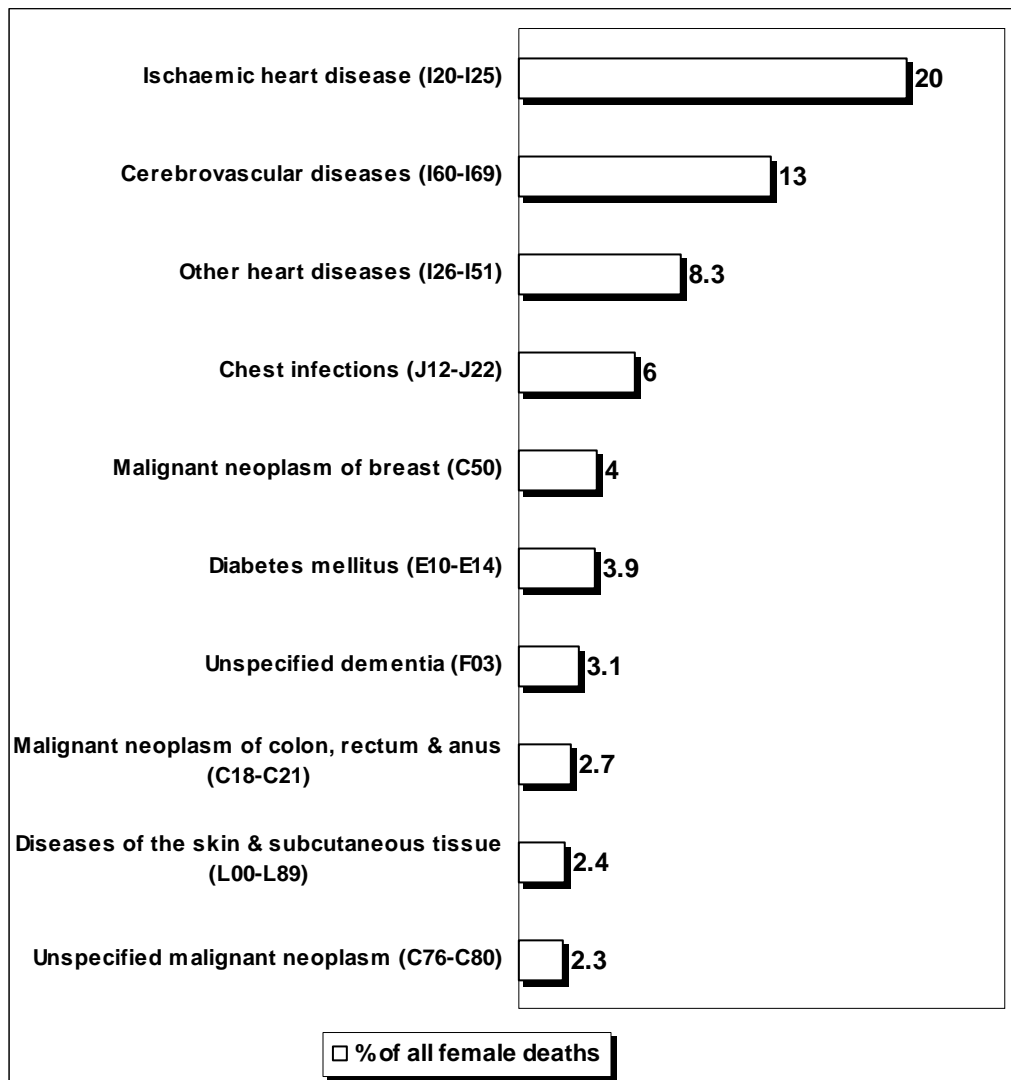


Figure 10: Percentages of leading causes of death in females

- The main cause of death in females is ischaemic heart disease responsible for 20% of all deaths in females; this is followed by cerebrovascular diseases.
- Malignant neoplasm of the breast followed by colorectal are the commonest causes of cancer deaths in females.
- Chest infections, dementia & pressure sores are an important cause of death in the elderly.
- Diabetes is both an important cause of death as well as a significant risk factor for circulatory diseases in both genders.

## Commonest causes of death by age group

The relative importance of different causes of death varies in different age groups.

### Deaths in children below the age of one year

There were 23 deaths in infants below the age of one year during the year 2004. This accounts for 0.77% of the total deaths. The most important causes of death were congenital anomalies accounting for 52% of deaths in this age group as well as conditions originating in the perinatal period which accounted for 48%. Respiratory distress of newborn related to prematurity was the commonest cause of conditions originating in the perinatal period.

### Deaths in children between 1-14 years of age

In this age group there were 14 deaths accounting for 0.5% of the total deaths. Neoplasms and diseases of the nervous system were the most important cause of death in this age group.

### Deaths in 15-44 age group

There were 92 deaths in this age group accounting for 3% of the total deaths. Transport accidents as well as ischaemic heart disease are the top causes of death in this age group.

<b>Underlying cause of death</b>	<b>Number of deaths</b>	<b>% of deaths in 15-44 age group</b>
Transport accidents (V01-V99)	10	10.9
Ischaemic heart disease (I20-I25)	9	9.8
Intentional self harm (X60-X84)	7	7.6
Malignant neoplasm without specification of site (C80)	6	6.5
Accidental poisoning by & exposure to noxious substances (X40-X49)	5	5.4

Table 3: Commonest causes of death in the 15-44 year age group

### Deaths in the 45-64 age group

There were 425 deaths in this age group representing 14.2% of all deaths. Deaths due to ischaemic heart disease and malignancies dominate this relatively young age group.

Underlying cause of death	Number of deaths	% of deaths in 45-64 age group
Ischaemic heart disease (I20-I25)	72	16.9
Malignant neoplasm of trachea, bronchus & lung (C33-C34)	39	9.2
Malignant neoplasm of breast (C50)	24	5.6
Malignant neoplasm of colon, rectum & anus (C18-C21)	20	4.7
Cerebrovascular diseases (I60-I69)	18	4.2
Malignant neoplasm of pancreas (C25)	17	4
Diseases of the liver (K70-K76)	16	3.8
Diabetes mellitus (E10-E14)	14	3.3
Malignant neoplasm of ovary (C56)	12	2.8
Intentional self-harm (X60-X84)	11	2.6

Table 4: Commonest causes of death in 45-64 age group

### Deaths in the 65-84 age group

There were 1731 deaths in this age group accounting for 58% of all deaths. Diseases of the circulatory system dominate this age group as the commonest cause of death.

Underlying cause of death	Number of deaths	% of deaths in 65-84 age group
Ischaemic heart disease (I20-I25)	403	23.3
Cerebrovascular diseases (I60-I69)	221	12.8
Other heart diseases (I26-I51)	93	5.4
Diabetes mellitus (E10-E14)	81	4.7
Malignant neoplasm of trachea, bronchus & lung (C33-C34)	77	4.4
Lower respiratory tract infections (J12-J22)	77	4.4
Chronic lower respiratory diseases (J40-J47)	72	4.2
Malignant neoplasm of colon, rectum & anus (C18-C21)	54	3.1
Malignant neoplasm of unspecified site (C76-C80)	44	2.5
Unspecified dementia (F03)	32	1.8

Table 5: Commonest causes of death in the 65-84 age group



In both the 45-64 and 65-84 age groups, ischaemic heart disease is the commonest cause of death. However in the former group, malignancies tend to follow ischaemic heart disease as the next commonest cause of death, and are of relative greater importance in that age group. In the 65-84 age group chronic conditions like cerebrovascular disease, heart failure, respiratory conditions and diabetes mellitus start manifesting their fatal outcome.

### Deaths in the 85+ age group

There were 714 deaths in this age group accounting for 24% of all deaths.

Underlying cause of death	Number of deaths	% of deaths in 85+ age group
Ischaemic heart disease (I20-I25)	163	22.8
Cerebrovascular diseases (I60-I69)	93	13.0
Other heart disease (I26-I51)	86	12.0
Lower respiratory tract infections (J12-J22)	86	12.0
Chronic lower respiratory diseases (J40-J47)	27	3.8
Dementia (F03)	26	3.6
Diseases of the skin & subcutaneous tissue (L00-L98)	24	3.4
Diabetes mellitus (E10-E14)	19	2.7
Falls (W00-W19)	19	2.7

Table 6: Commonest causes of death in the 85+ age group

Circulatory diseases again predominate in this age group. However other conditions including chest infections & lower respiratory tract diseases, dementia and pressure sores (diseases of the skin & subcutaneous tissue) are important causes of morbidity and mortality in the elderly. It must be noted that often in this age group several diseases are present and it is sometimes difficult to decide which is the predominant cause of death. Malignancies tend to be a less important cause of death in this age group.

### Potential years of life lost (PYLL)

Mortality in the younger age groups is of interest and importance especially from a socio-economic point of view since these form the work-force of society. PYLL due to a particular cause is defined as the sum of the years lost due to that cause for all individuals dying before a particular age (65 years in the case of PYLL-65). Table 7 shows the most important conditions which contribute to the largest number of potential years lost. However causes that occur in the perinatal period or due to congenital defects have been excluded as these over inflate their figures, as the difference between the cut-off age and their age (usually 0) results in the maximal possible difference. However these have been included in the total.

Cause of death	ICD-10 codes	PYLL-65 years			% Total PYLL
		males	females	Total	
Ischaemic heart disease	I20-I25	676	99	775	8.7
Transport accidents	V01-V99	407	17	424	4.7
Intentional self-harm	X60-X84	211	168	379	4.2
Malignant neoplasm of breast	C50	1	298	299	3.3
Malignant neoplasm of trachea, bronchus & lung	C33-C34	216	59	275	3.1
Malignant neoplasm of meninges, brain & other parts of central nervous system	C70-C72	137	131	268	3
Malignant neoplasms of ill-defined,secondary & unspecified site (C76-C80)	C76-C80	173	85	258	2.9
Accidental poisoning by & exposure to noxious substances	X40-X49	157	45	202	2.3
Other heart diseases	I26-I51	39	149	188	2.1
Diseases of the liver	K70-K76	122	56	178	2
Remainder		3313	2388	5701	63.7
<b>Total</b>		<b>5452</b>	<b>3495</b>	<b>8947</b>	<b>100</b>

Table 7: Potential years of life lost under 65 years during the year 2004 (PYLL-65)

Ischaemic heart disease, transport accidents and intentional self-harm contribute to the greatest number of potential years of life lost. External causes of death are important, in that, a large proportion of them are preventable.

## Section 2: Individual diseases

### **Diseases of the circulatory system (ICD-10 codes I00-I99)**

Diseases of the circulatory system account for 42% of all deaths. They are major killers in the middle age and elderly. Ischemic heart disease, heart failure and stroke account for the majority of deaths from diseases of the circulatory system. The age-standardised death rate (ESP) from diseases of the circulatory system was 255 per 100,000 population a decrease over the previous year.

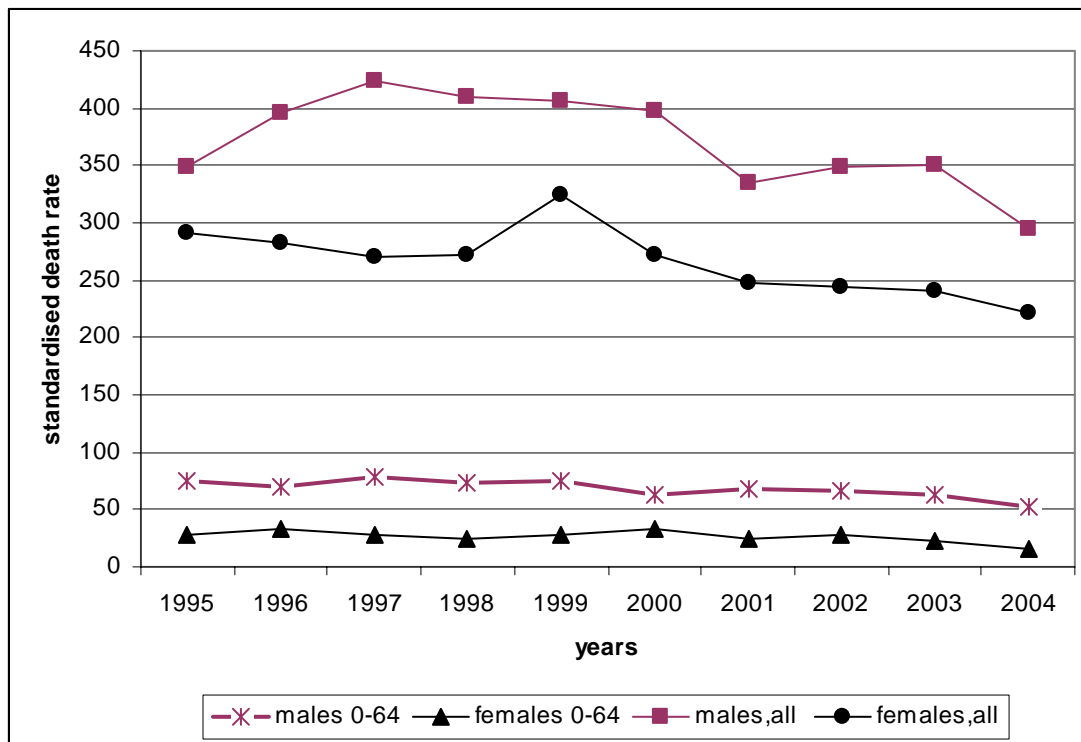


Figure 11: SDR, diseases of circulatory system in males & females in Malta 1995-2004

Source: WHO/Europe-Health for all Database (HFA-DB)

There has been a decreasing trend in deaths due to circulatory diseases in Malta over the past years. This decreasing trend is also being seen in many countries in Europe.

**Ischaemic heart disease (ICD-10 codes I20-I25)**

Ischaemic heart disease is the leading cause of death accounting for 22% of all deaths. There were 346 male deaths and 301 female deaths a decrease over the previous year. A substantial proportion of heart failure deaths are also due to ischaemic heart disease.

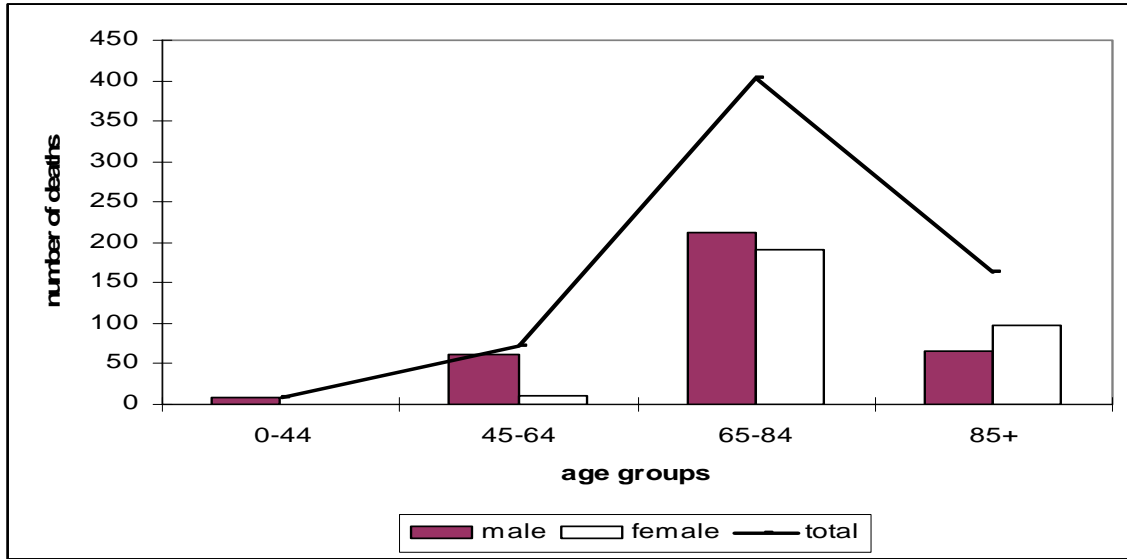


Figure 12: Deaths due to ischaemic heart disease by age group and gender

**Cerebrovascular diseases (ICD 10 codes I60-I69)**

There were 334 deaths accounting for 11% of all deaths.

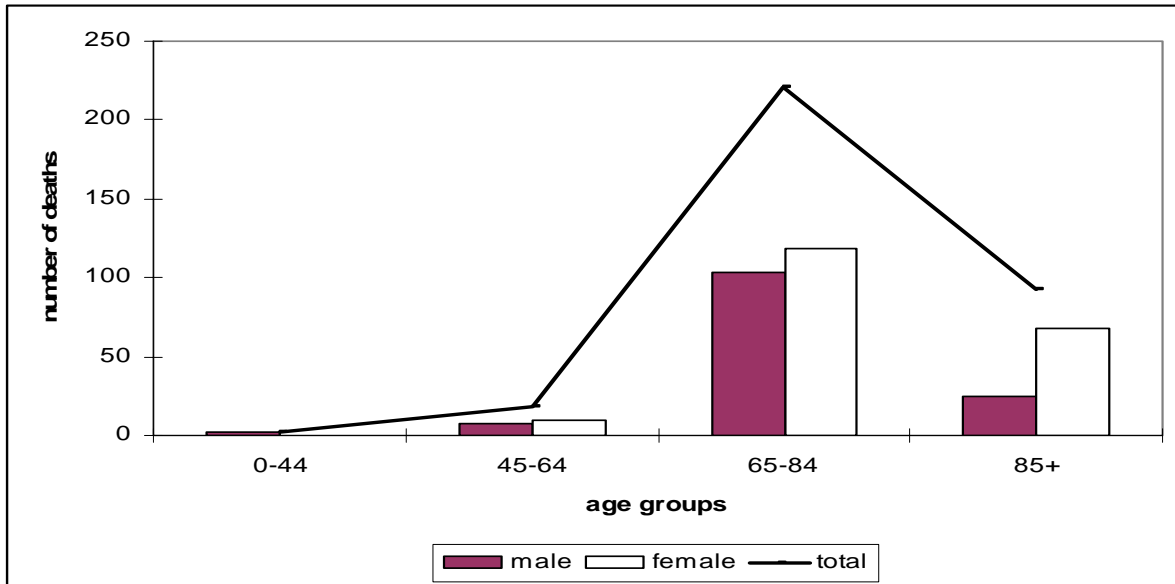


Figure 13: Deaths due to cerebrovascular diseases by age group and gender

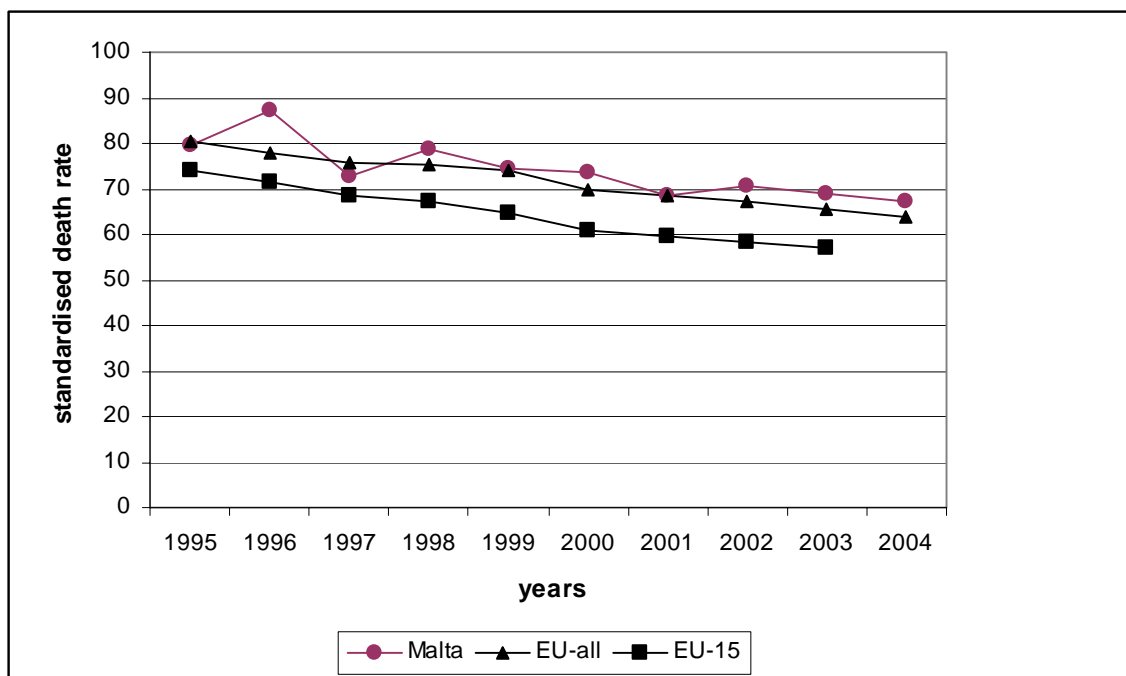


Figure 14: SDR, cerebrovascular diseases, all ages /100,000 over 10 years  
 Source: WHO/Europe-Health for all Database (HFA-DB)

Malta as well as the EU are showing a decreasing trend in deaths due to cerebrovascular diseases.

### Average age of death from diseases of the circulatory system

Table 8 shows that for most deaths due to circulatory diseases the average age of death for males is lower than that for females.

Cause of death	ICD-10 code	average age of death (yrs)		
		male	female	all
Acute rheumatic fever & chronic rheumatic heart diseases	I00-I99	65	66.6	66.1
Hypertensive diseases	I10-I13	63.2	78.7	74.5
Ischaemic heart diseases	I20-I25	73.9	80.7	77.1
Other heart diseases	I26-I51	79.6	82.8	81.7
Cerebrovascular diseases	I60-I69	76.8	80.5	79
Atherosclerosis	I70	78.5	84.6	82
Remainder of diseases of the circulatory system	I71-I99	72.6	79	74.7
All circulatory diseases	I00-I99	75.1	80.9	78.2

Table 8: Average age of death from diseases of the circulatory system

### Neoplasms (ICD 10 codes C00-D48)

There were 724 deaths due to neoplasms accounting for 24% of all deaths. The age standardised death rate (ESP) was 155 per 100,000 population. There were 396 male deaths and 328 female deaths.

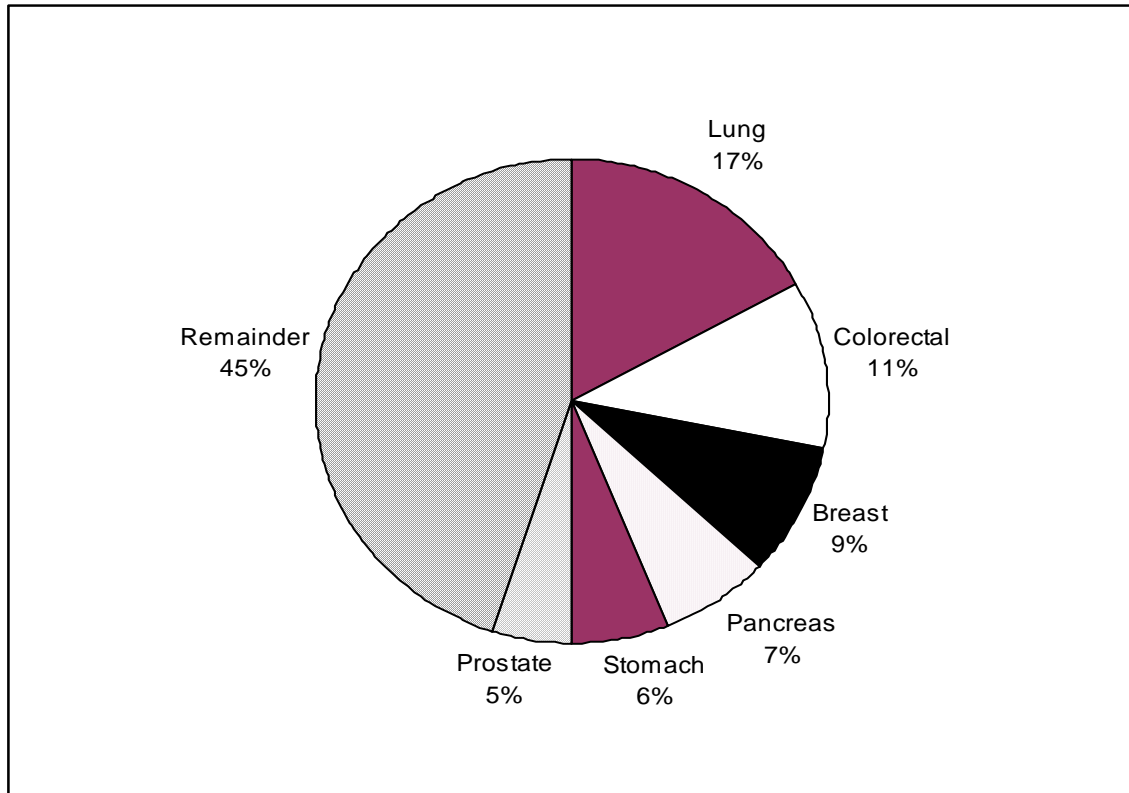


Figure 15: Most common cancer deaths in both sexes

- Lung cancer is the leading cause of death due to malignancy accounting for 17% of all cancer deaths.
- Median age at death for males and females dying from cancer was 71 years.

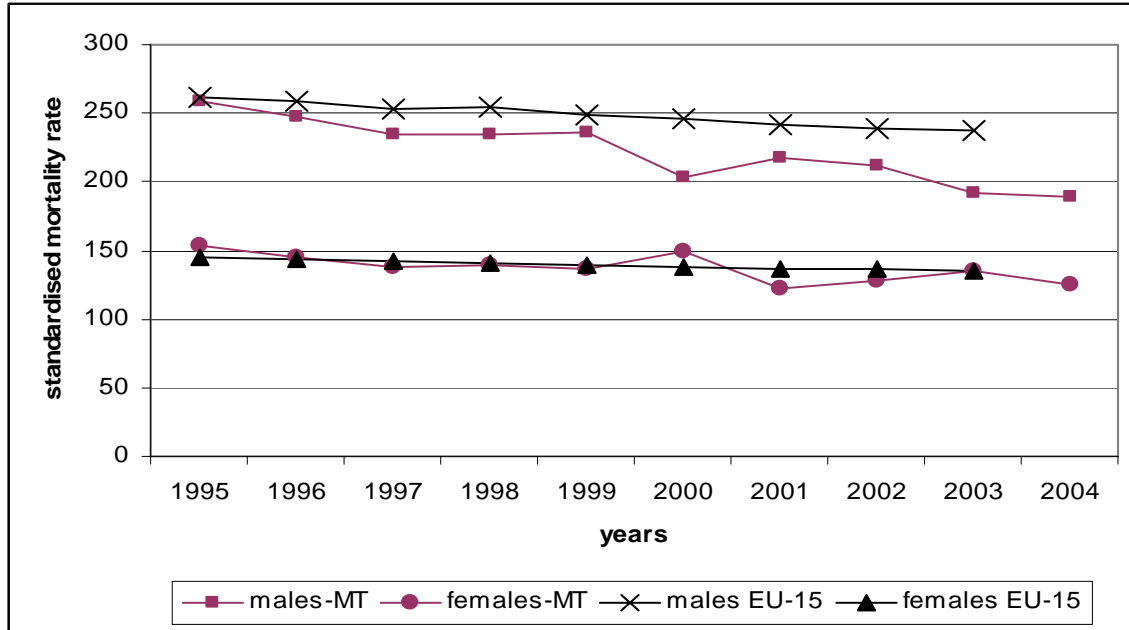


Figure 16: Standardised mortality rate (ESP), malignant neoplasms per 100,000 population in Malta compared to EU-15

Source: WHO/Europe-Health for all Database (HFA-DB)

**Most common cancer deaths in males**

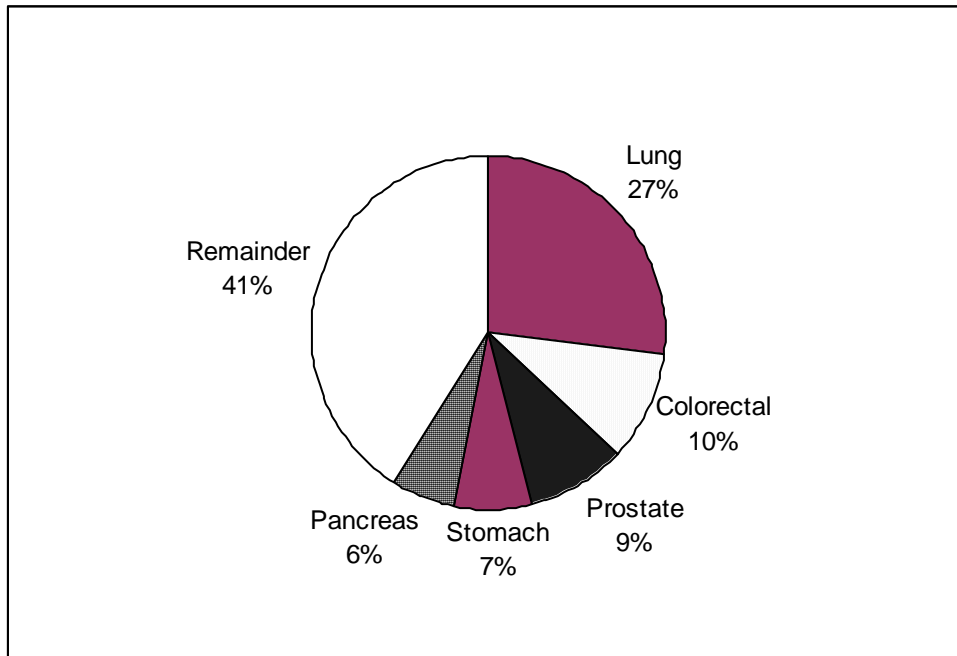


Figure 17: Most common cancer deaths in males

**Most common cancer deaths in females**

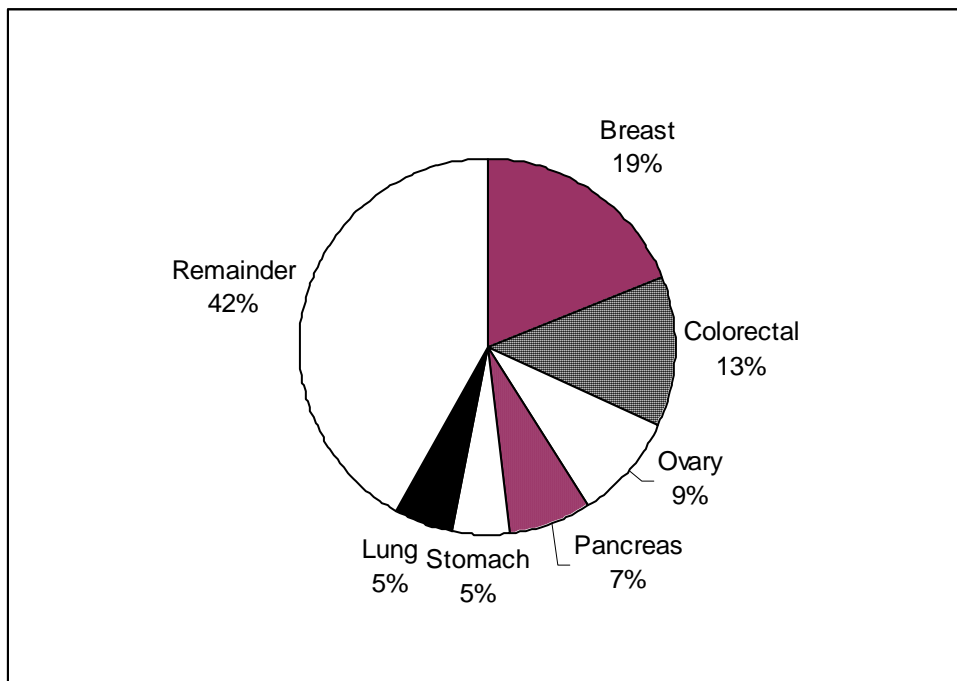


Figure 18: Most common cancer deaths in females



**Malignant neoplasm of trachea, bronchus and lung (ICD-10 codes C33-C34)**

There were 123 deaths during the year 2004. There were 107 male deaths and 16 female deaths. The age standardized death rate (ESP) for malignant neoplasm of trachea, bronchus and lung was of 26 per 100,000 population.

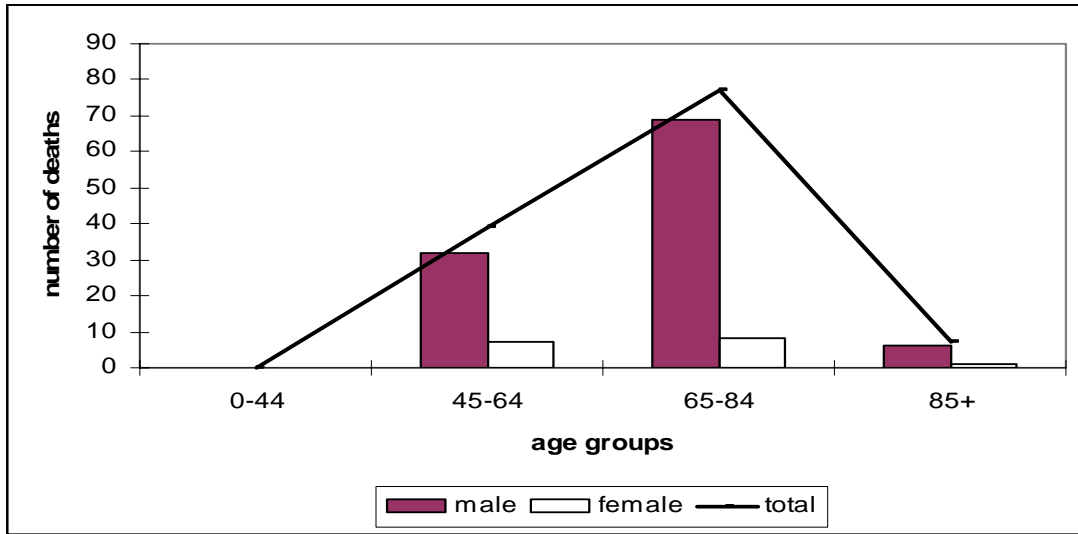


Figure 19: Deaths from cancer of trachea, bronchus & lung by age group & gender

**Malignant neoplasm of colon, rectum and anus (C18-C21)**

There were 79 deaths this year. There were 38 male deaths and 41 female deaths. The age standardized death rate (ESP) from neoplasm of the colon, rectum and anus was 16.6 per 100,000 population for the year 2004.

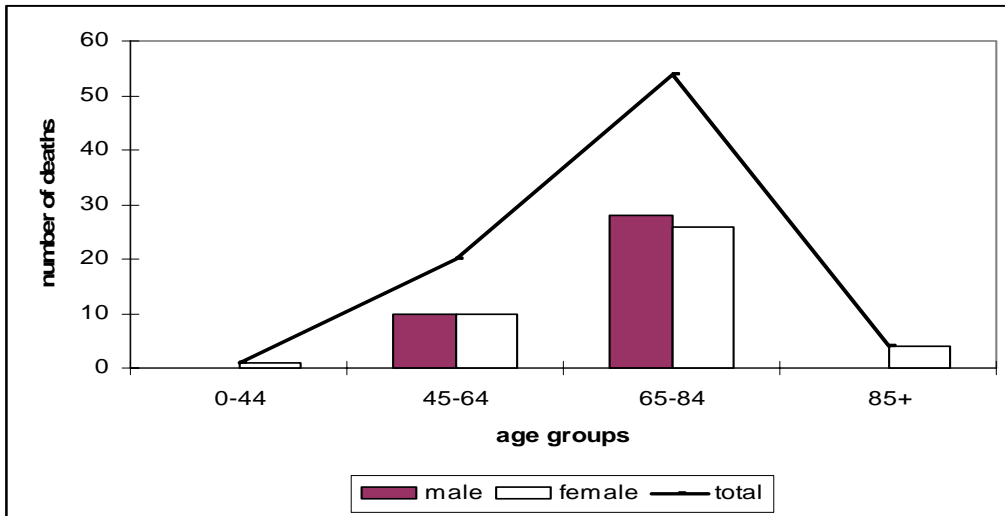


Figure 20: Deaths due to neoplasm of colon, rectum & anus by age group & gender

**Malignant neoplasm of breast (C50), cervix (C53), uterus (C54-C55), & ovary (C56)**

There were 62 deaths due to breast cancer (61 females, 1 male), there were 28 deaths due to ovarian cancer, 11 due to uterine and 6 due to cervical cancer.

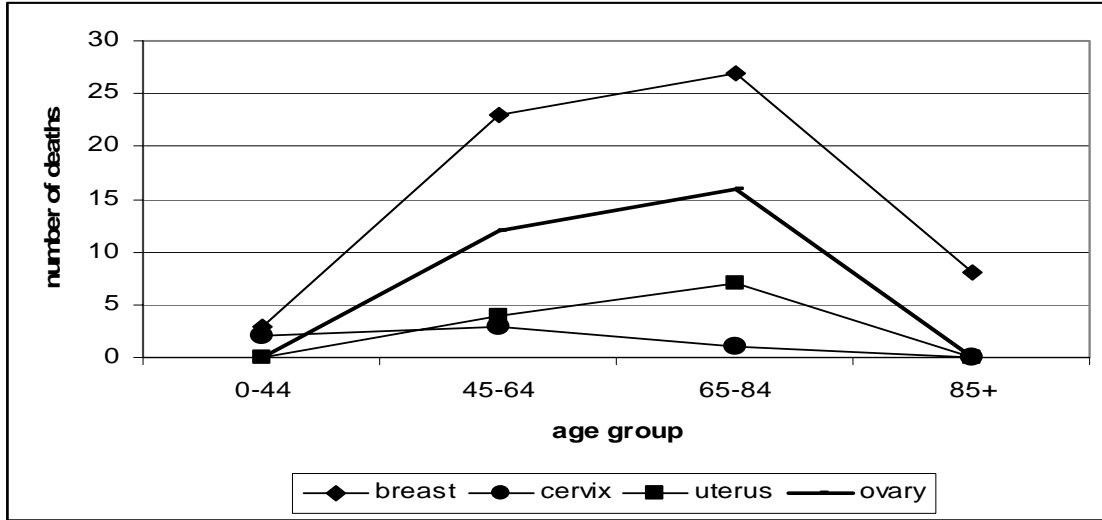


Figure 21: Deaths due to breast, cervical, uterine & ovarian cancer by age group in females

**Malignant neoplasms in the younger age groups: 0-44 years**

There were 29 deaths due to neoplasms in this age group accounting for 4% of all cancer deaths. The most common cancer deaths in this age group was leukaemia (5 deaths).

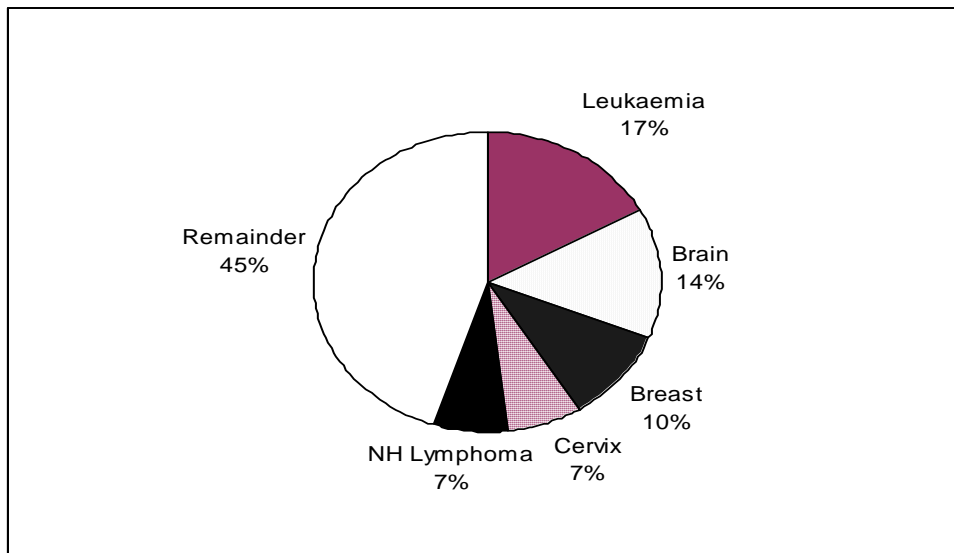


Figure 22: Most common cancer deaths in 0-44 age group

### Diseases of the respiratory system (ICD 10 code J00-J98)

There were 323 deaths due to respiratory conditions during 2004 accounting for 11% of all deaths. There were 183 male and 140 female deaths. The age standardized death rate (ESP) was 67 per 100,000 population, a slight decrease over the previous year.

### Acute respiratory infections (ICD codes J10-J22)

These include influenza (ICD code J10-J11), pneumonia (ICD 10 code J12-J18), acute bronchitis (ICD 10 code J20), acute bronchiolitis (ICD 10 code J21) and other unspecified acute lower respiratory infections (ICD 10 codes J22).

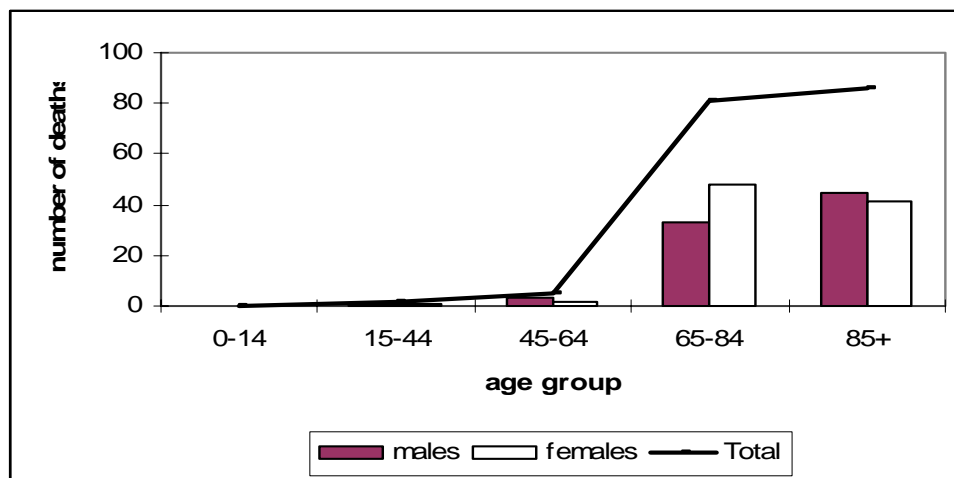


Figure 23: Deaths due to respiratory infections by age group and gender

### Chronic lower respiratory diseases (ICD 10 code J40-J47)

There were 84 deaths in males and 23 deaths in females during 2004 accounting for 3.5% of all deaths. Deaths due to these conditions are commoner in males often related to cigarette smoking.

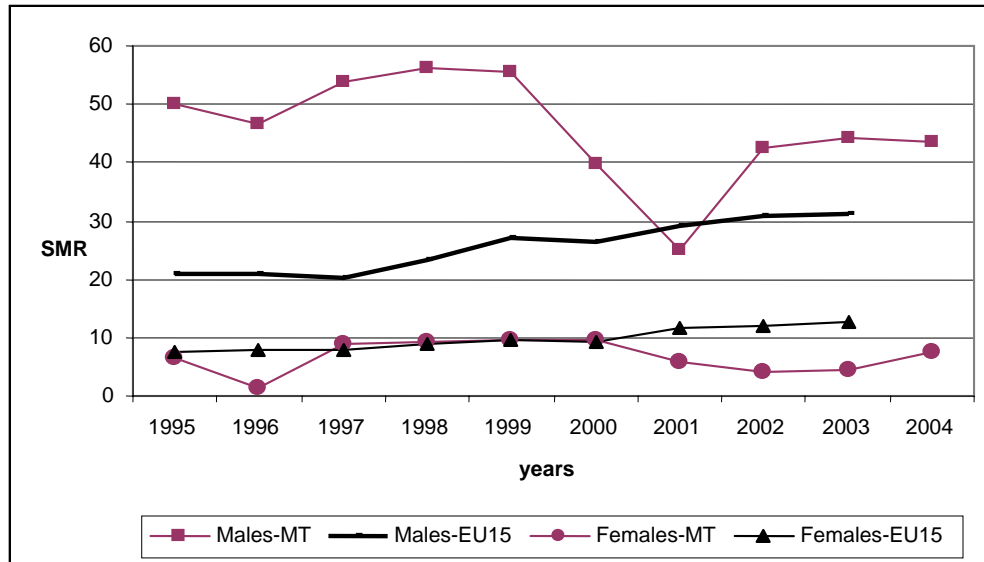


Figure 24: Standardised mortality rate (ESP), bronchitis/emphysema/asthma per 100,000 population in Malta compared to EU-15

Source: WHO/Europe-Health for all Database (HFA-DB)

## Smoking

Deaths due to smoking are often difficult to quantify since even though it is a risk factor for many diseases, other factors may also play a part.

However percentages from a number of diseases are taken to calculate deaths due to smoking. The percentages used are those recommended by the World Health Organisation. One must note that this is an estimate since there are other diseases in which smoking plays a part and also in the diseases mentioned other risk factors may be present.

There were **344** deaths attributable to smoking in residents of the Maltese Islands during the year 2004. There were **245** male deaths and **99** female deaths. These figures were obtained using the method described below (as recommended by WHO).

## Males

Cause of Death	ICD-10 Codes	Total no. of deaths	% advised by WHO related to smoking
Deaths from cancer of trachea/bronchus/lung	C33-C34	107	90%= 96.3
Deaths from chronic bronchitis/emphysema	J40-J44	83	75%= 62.25
Deaths from ischaemic heart disease	I20-I25	346	25%= 86.5

Table 9: Deaths due to cigarette smoking in males

**Females**

<b>Cause of Death</b>	<b>ICD-10 Codes</b>	<b>Total no. of deaths</b>	<b>% advised by WHO related to smoking</b>
Deaths from cancer of trachea/bronchus/lung	C33-C34	16	90% = 14.4
Deaths from chronic bronchitis/emphysema	J40-J44	13	75% = 9.75
Deaths from ischaemic heart disease	I20-I25	301	25% = 75.25

Table 10: Deaths due to cigarette smoking in females

**Diseases of the digestive system (ICD 10 codes K00-K92)**

There were 129 deaths due to diseases of the digestive system accounting for 4% of all deaths. There were 60 male deaths and 69 female deaths. The age standardized death rate (ESP) for diseases of the digestive system was 26.8 per 100,000 population.

**Diseases of the liver (ICD 10 code K70-K76)**

There were 28 deaths of which 18 were male and 10 were female. Alcoholic liver diseases (ICD 10 code K70) accounted for 16 male and 5 female deaths in this group.

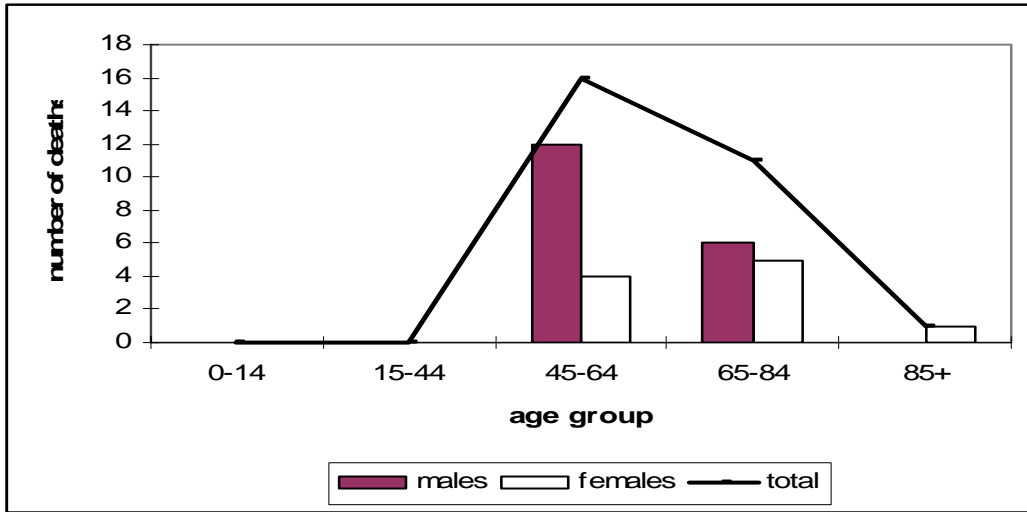


Figure 25: Deaths due to liver disease by age group and gender

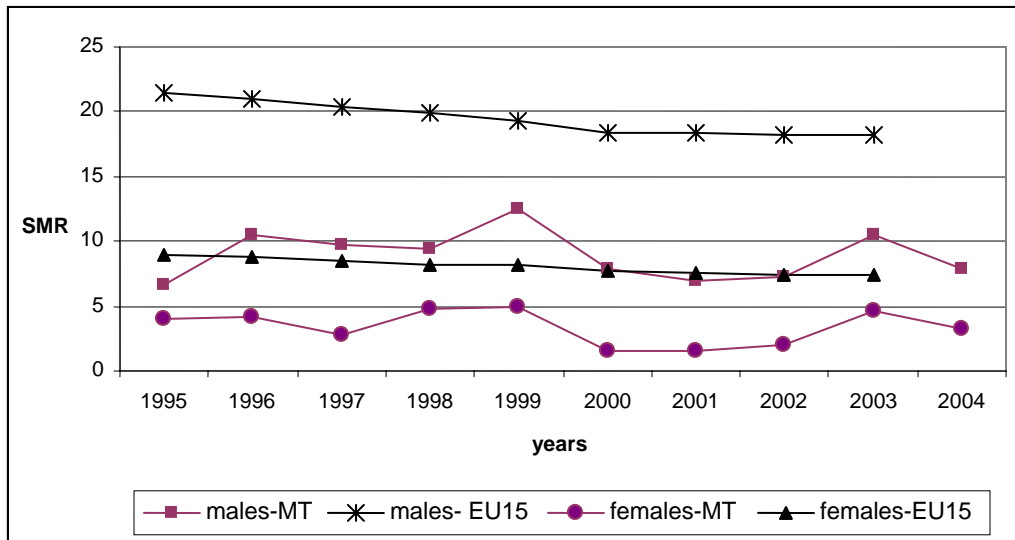


Figure26: Standardised mortality rate (ESP), chronic liver disease & cirrhosis/100,000 population in Malta compared to EU-15

Source: WHO/Europe-Health for all Database (HFA-DB)

### Diabetes Mellitus (ICD 10 codes E10-E14)

Diabetes Mellitus is common on the Maltese Islands. Even though a relatively common cause of death it does not reflect the actual prevalence of diabetes in Malta, since it is often a risk factor for many diseases and not necessarily the underlying cause of death. During the year 2004 there were 114 deaths due to diabetes, 54 males and 60 females. The age standardised death rate (ESP) was 23 per 100,000 population, an increase over the previous year.

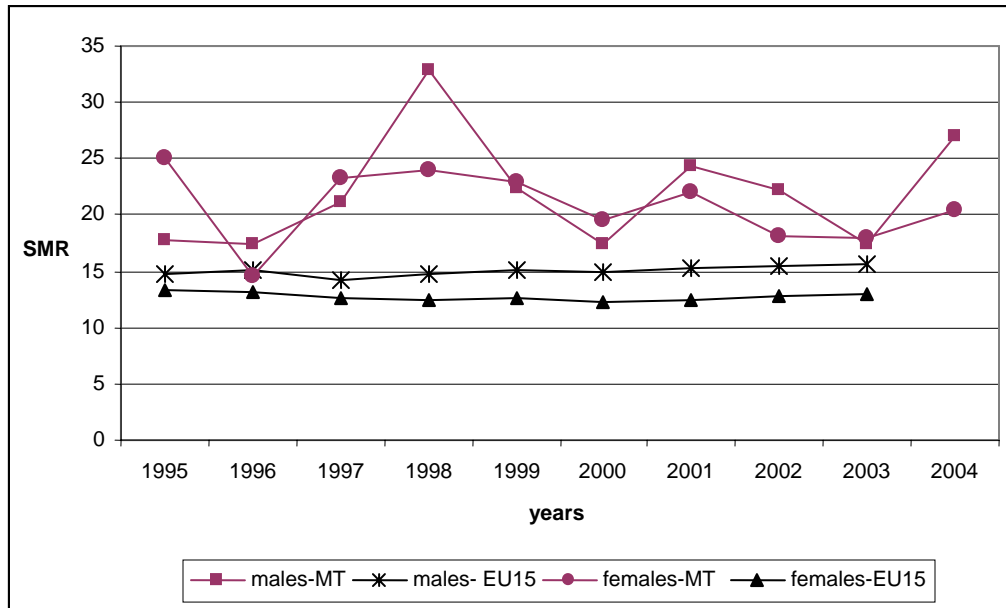


Figure 27: Standardised mortality rate (ESP), Diabetes/100,000 population in Malta compared to EU-15  
 Source: WHO/Europe-Health for all Database (HFA-DB)

**Infectious and parasitic diseases (ICD 10 code A00-B99, G00, G03-G04, N70-N73)**

There were 13 deaths due to infectious and parasitic diseases in the above categories accounting for 0.4% of all deaths. There were 8 male deaths and 5 female deaths. Even though the number of deaths is small some infections are a cause of death in the younger age groups.

<b>Cause of death</b>	<b>ICD-10 code</b>	<b>Gender</b>	<b>Age group</b>
Leptospirosis	A27.9	M	15-24
Acute meningococcaemia	A39.2	F	45-54
Meningococcaemia, unspecified	A39.4	M	35-44
Septicaemia, unspecified	A41.9	F	0-14
		M	65-74, 85+
Septicaemia, unspecified	A41.9	F	75-84, 75-84
		M	25-34
Varicella pneumonia	B01.2	M	75-84
Chronic viral hepatitis C	B18.2	M	75-84
Unspecified human immunodeficiency virus disease	B24	M	35-44, 45-54
Sequelae of respiratory & unspecified tuberculosis	B90.9	F	85+

\*there were also 2 female deaths in the 45-54 age group & 55-64 age group who died of liver cancer secondary to hepatitis B. Coded as liver cancer according to ICD-10 rules.

Table 11: Deaths from infectious and parasitic diseases



### External causes of morbidity and mortality (ICD 10 codes V01-Y98)

There were 125 deaths due to external causes during the year 2004 accounting for 4.2% of all deaths. There were 67 male deaths and 58 female deaths. The age-standardised death rate was 28 per 100,000 population.

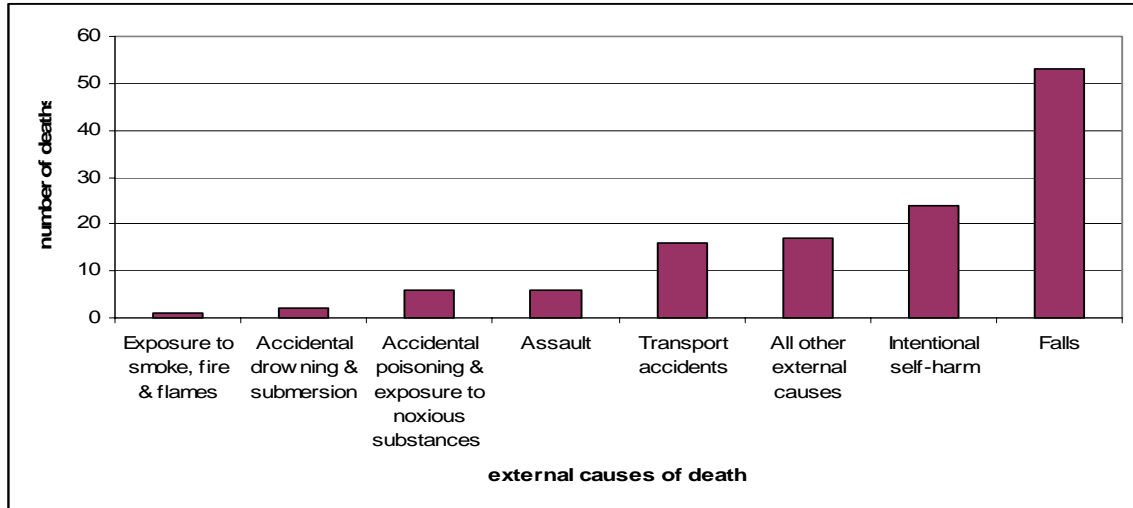


Figure 28: Number of deaths due to external causes

### Transport accidents (ICD 10 code V01-V99)

There were 16 deaths due to transport accidents during the year 2004. There were 13 male deaths and 3 female deaths. Unfortunately a large proportion of these deaths occur in the younger age groups.

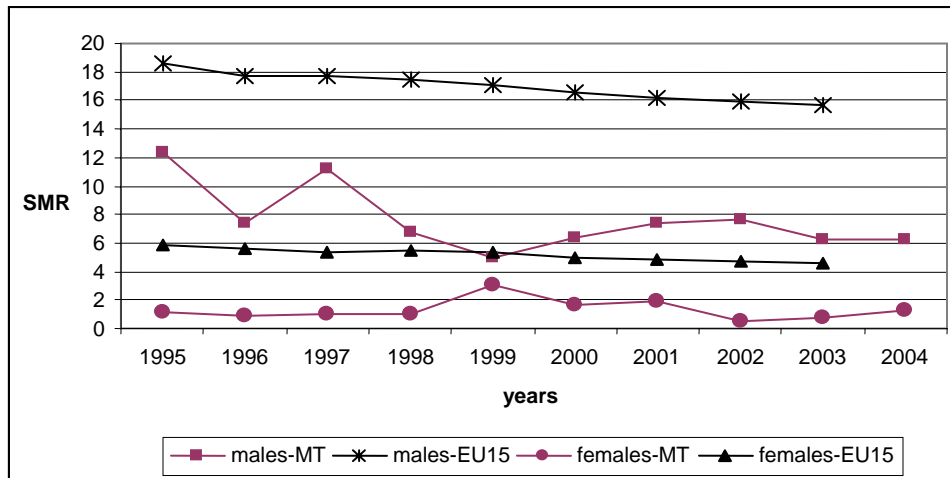


Figure29: Standardised mortality rate (ESP), Transport accidents/100,000 population in Malta compared to EU-15

Source: WHO/Europe-Health for all Database (HFA-DB)

### Falls (ICD 10 code W00-W19)

There were 53 deaths due to accidental falls. There were 21 males and 32 females. Falls & associated hip fractures are an important cause of morbidity & mortality in the elderly.

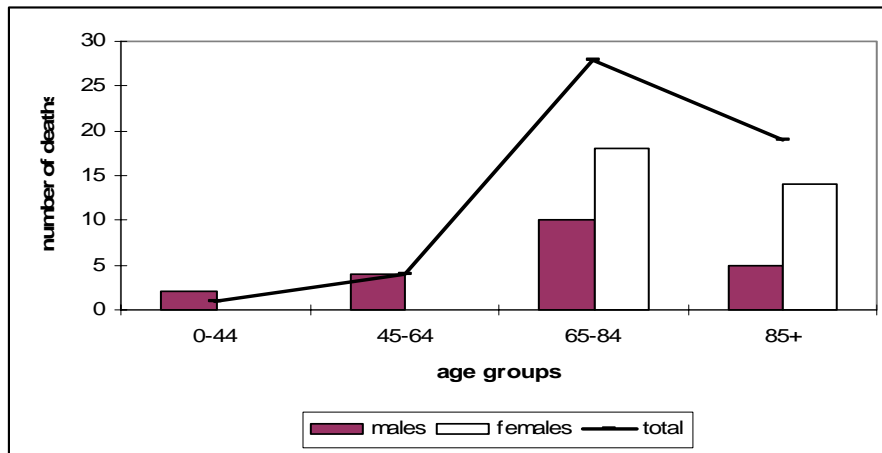


Figure 30: Deaths due to falls by gender and age group

### Intentional self harm (ICD 10 codes X60-X84)

Suicide is one of the topics that from time to time is being addressed by professionals in various disciplines. This is because of the interest that suicide always generates. It is therefore imperative that the right conclusions are made as one can give different interpretations and conclusions from the same information. Before delving into the statistics, the following points must be made clear:

- Suicide poses a problem for its identification and at times may be extremely difficult to decide whether a death was a suicide or an accident or a homicide.
- Suicides carries a stigma and death due to suicide is rarely written on the death certificate.
- The National Mortality Registry is in close collaboration with the police and pathologists in order to produce statistics as accurate as possible regarding suicides.

During 2004, there were 24 deaths due to suicide. There were 14 male deaths and 10 female deaths.

- Deaths due to suicide are usually commoner in males.
- The most common modes of suicides in males were by hanging and fall from height.
- The commonest modes of suicide in females were also by fall from height and hanging.

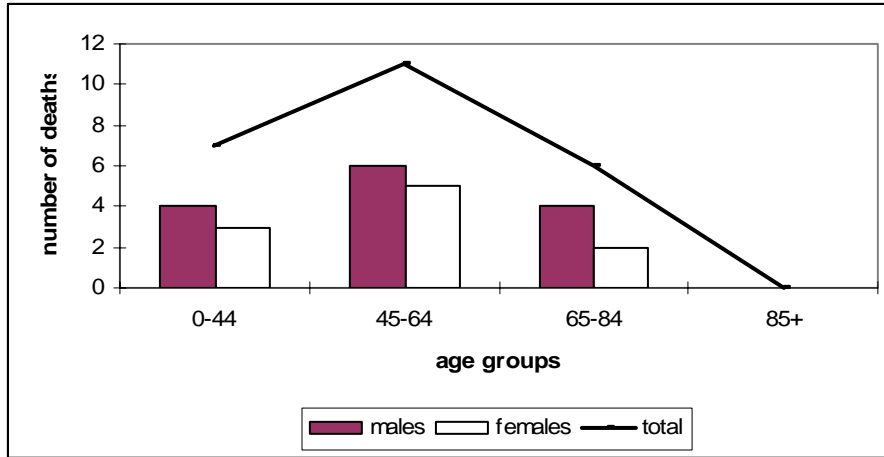


Fig 31: Deaths due to intentional self harm by age group and gender

**Drug overdose deaths (ICD-10 codes: X40-X44, X60-X64, X85, Y10-Y14)**

These include accidental, suicidal, homicidal or deaths of undetermined intent. There were 7 deaths due to drug overdoses in the above categories. There were 5 male deaths and 2 female deaths. Drug overdose is an important cause of death in the younger age groups.

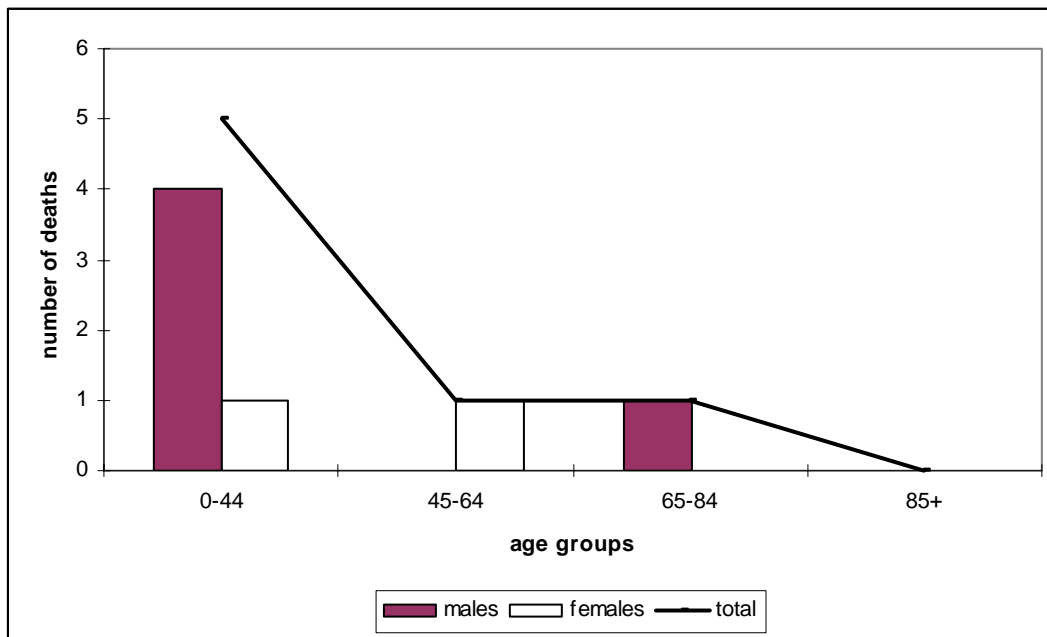


Figure 32: Deaths due drug overdose by gender and age group

### Section 3: Perinatal and infant mortality

Infant mortality statistics are an important source of information which give an indication about the social and economic state of a country as well as the health care to an especially vulnerable group infants.

During the year 2004 there were 27 perinatal deaths reported to the national mortality registry, consisting of 15 foetal deaths and 12 early neonatal deaths. There were 23 infant deaths.

Table 12 gives a more detailed breakdown of foetal, neonatal and infant deaths according to the presence or otherwise of congenital anomalies classified as underlying cause of death.

	Birth weight									Total		
	< 500g or equivalent			500-999g or equivalent			≥ 1000g or equivalent					
	M	F	T	M	F	T	M	F	T	M	F	T
<b>Foetal deaths (FD)</b>	<b>0</b>	<b>0</b>	<b>0</b>	<b>0</b>	<b>0</b>	<b>0</b>	<b>9</b>	<b>6</b>	<b>15</b>	<b>9</b>	<b>6</b>	<b>15</b>
FD with malformations	0	0	0	0	0	0	2	2	4	2	2	4
FD without malformations	0	0	0	0	0	0	7	4	11	7	4	11
<b>Early neonatal deaths (END)</b>	<b>0</b>	<b>0</b>	<b>0</b>	<b>2</b>	<b>2</b>	<b>4</b>	<b>7</b>	<b>1</b>	<b>8</b>	<b>9</b>	<b>3</b>	<b>12</b>
END with malformations	0	0	0	0	0	0	5	0	5	5	0	5
END without malformations	0	0	0	2	2	4	2	1	3	4	3	7
<b>Late neonatal deaths (LND)</b>	<b>0</b>	<b>0</b>	<b>0</b>	<b>0</b>	<b>0</b>	<b>0</b>	<b>2</b>	<b>3</b>	<b>5</b>	<b>2</b>	<b>3</b>	<b>5</b>
LND with malformations	0	0	0	0	0	0	2	2	4	2	2	4
LND without malformations	0	0	0	0	0	0	0	1	1	0	1	1
<b>Post neonatal deaths (PND)</b>	<b>0</b>	<b>0</b>	<b>0</b>	<b>0</b>	<b>1</b>	<b>1</b>	<b>3</b>	<b>2</b>	<b>5</b>	<b>3</b>	<b>3</b>	<b>6</b>
PND with malformations	0	0	0	0	0	0	1	2	3	1	2	3
PND without malformations	0	0	0	0	1	1	2	0	2	2	1	3
<b>Infant deaths (ID)</b>	<b>0</b>	<b>0</b>	<b>0</b>	<b>2</b>	<b>3</b>	<b>5</b>	<b>12</b>	<b>6</b>	<b>18</b>	<b>14</b>	<b>9</b>	<b>23</b>
ID with malformations	0	0	0	0	0	0	8	4	12	8	4	12
ID without malformations	0	0	0	2	3	5	4	2	6	6	5	11

Table 12: Foetal, neonatal & infant deaths by birth weight, age-groups, gender & presence or absence of malformations.

Malformations include ICD-10 codes: G71, Q00-Q99

Foetal death rate:  $15 / (3887 + 15) * 1000 = 3.8$  per 1000 total births

Perinatal mortality rate:  $27 / (3887 + 15) * 1000 = 6.9$  per 1000 total births

Neonatal mortality rate:  $17 / 3887 * 1000 = 4.4$  per 1000 live births

Postneonatal death rate:  $6 / 3887 * 1000 = 1.5$  per 1000 live births

Infant mortality rate:  $23 / 3887 * 1000 = 5.9$  per 1000 live births

### **International Statistics:**

For international comparisons only deaths with a birth weight of over 1000g are considered.

Foetal death rate, weight specific =  $15 / (3877+15) * 1000 = 3.85$  per 1000 total births

Perinatal mortality rate, weight specific =  $23 / (3877+15) * 1000 = 5.91$  per 1000 total births

Neonatal death rate, weight specific =  $13 / 3877 * 1000 = 3.35$  per 1000 live births

Postneonatal death rate, weight specific =  $5 / 3877 * 1000 = 1.29$  per 1000 live births

Infant mortality rate, weight specific =  $18 / 3877 * 1000 = 4.64$  per 1000 live births

**Section 4: Deaths in non-residents who died in the Maltese Islands during 2004**

There were 73 deaths in non-residents. There were 52 male deaths and 21 female deaths. The commonest causes of death were diseases of the circulatory system mainly ischaemic heart disease.

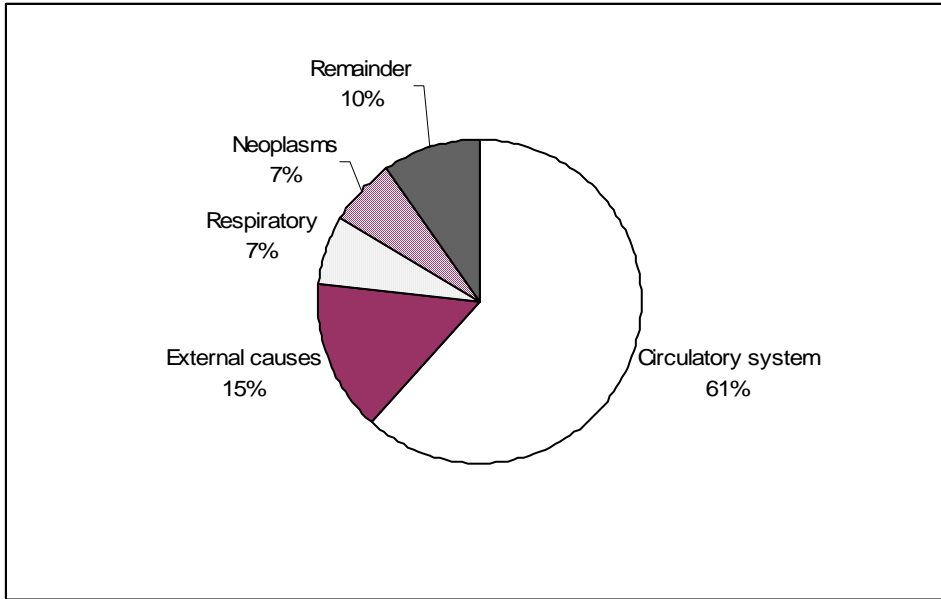


Figure 33: Causes of death in non-residents

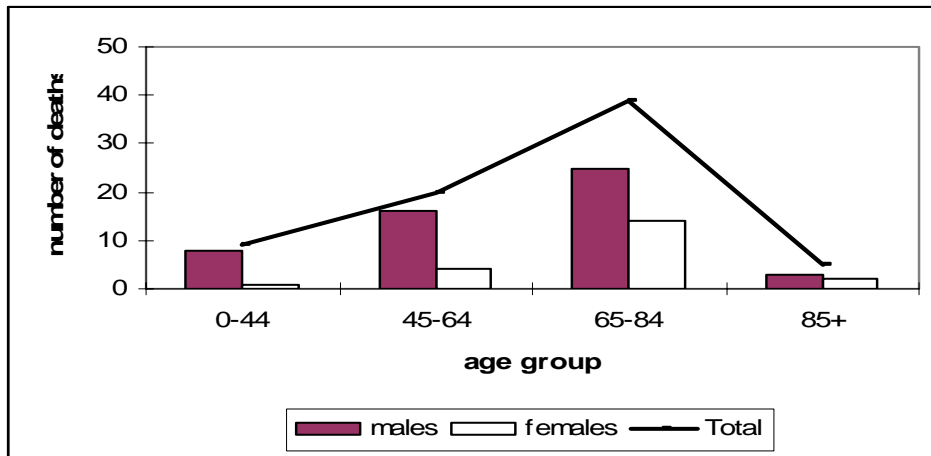


Figure 34: Deaths in non-residents by age group and gender

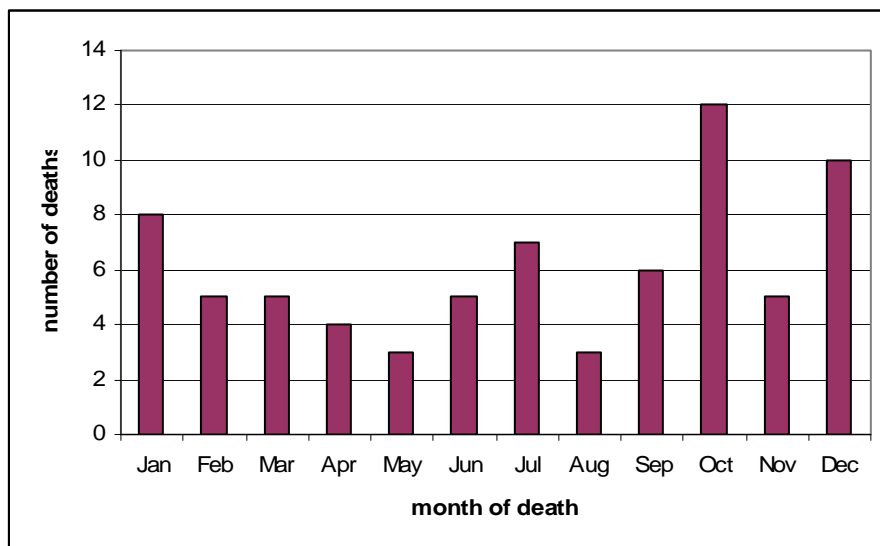


Figure 35: Deaths in tourists by month of death

The peak number of deaths occurred mainly in the winter months.

Country of residence	Number of deaths	% of deaths in non residents
United Kingdom	46	63
Germany	5	6.8
Egypt	3	4.1
Australia	2	2.7
Denmark	2	2.7
France	2	2.7
Italy	2	2.7
Libja	2	2.7
All other countries	9	12.3
<b>Total</b>	<b>73</b>	<b>100</b>

Table 13: Deaths in non-residents by country of residence

The majority of deaths in non-residents are in persons residing in the United Kingdom. This also reflects the fact that the majority of tourists also come from the UK.

## Section 5: Statistical tables

Table 14 represents the age standardized death rate (ESP) per 100,000 population by gender and cause.

The Mortality Tabulation List 1 (MTL 1) of the International Classification of Diseases (ICD-10) has been used as the source of grouping of causes of death in table 14.

ICD-10 code	MTL1	Causes of death	Age standardised mortality rate		
			Males	Females	Persons
		<b>All causes</b>	<b>752.82</b>	<b>531.08</b>	<b>627.93</b>
<b>A00-B99</b>	<b>1001</b>	<b>Certain infectious &amp; parasitic diseases</b>	<b>4.14</b>	<b>1.91</b>	<b>2.98</b>
A39	1011	Meningococcal infection	0.57	0.99	0.77
A40-A41	1012	Septicaemia	1.17	0.57	0.8
B15-B19	1019	Viral hepatitis	0.47	0	0.19
B20-B24	1020	Human immunodeficiency virus (HIV) disease	0.94	0	0.47
A21-A32,A38,A42-A49, A65-A79,A81,A83-A89, B00-B04,B06-B09,B25- B49,B58-B64,B66-B94, B99	1025	Remainder of certain infectious & parasitic diseases	0.99	0.36	0.74
<b>C00-D48</b>	<b>1026</b>	<b>Neoplasms</b>	<b>193.76</b>	<b>127.59</b>	<b>155.04</b>
<b>C00-C97</b>		<b>Malignant neoplasms</b>			
C00-C14	1027	Malignant neoplasm of lip, oral cavity & pharynx	4.7	1.98	3.11
C15	1028	Malignant neoplasm of oesophagus	1.24	0.66	0.95
C16	1029	Malignant neoplasm of stomach	13.4	5.9	9
C18-C21	1030	Malignant neoplasm of colon, rectum & anus	17.8	15.6	16.61
C22	1031	Malignant neoplasm of liver & intrahepatic bile ducts	4.63	2.67	3.32
C25	1032	Malignant neoplasm of pancreas	12.54	8.85	10.63
C32	1033	Malignant neoplasm of larynx	2.42	0	1.07



ICD-10 code	MTL1	Causes of death	Age standardised mortality rate		
			Males	Females	Persons
C33-C34	1034	Malignant neoplasm of trachea, bronchus & lung	52.44	6.16	26.36
C43	1035	Malignant melanoma of skin	0.4	1.92	1.33
C50	1036	Malignant neoplasm of breast	0.57	24.21	13.61
C53	1037	Malignant neoplasm of cervix uteri	0	2.68	1.36
C54-C55	1038	Malignant neoplasm of other & unspecified parts of uterus	0	4.45	2.43
C56	1039	Malignant neoplasm of ovary	0	11.7	6.29
C61	1040	Malignant neoplasm of prostate	17.06	0	6.85
C67	1041	Malignant neoplasm of bladder	11.38	2.16	5.97
C70-C72	1042	Malignant neoplasm of meninges, brain & other parts of the central nervous system	2.76	4.18	3.53
C82-C85	1043	Non-Hodgkin's lymphoma	5.68	5.74	5.81
C90	1044	Multiple myeloma & malignant plasma cell neoplasms	3.6	2.26	2.87
C91-C95	1045	Leukaemia	7.83	2.01	4.79
C17,C23-C24,C26-C31, C37-C41,C44-C49,C51-C52,C57-C60,C62-C66, C68-C69,C73-C81, C88, C96-C97	1046	Remainder of malignant neoplasms	30.51	22.44	25.85
D00-D48	1047	Remainder of neoplasms	4.78	2.01	3.21
<b>D50-D89</b>	<b>1048</b>	<b>Diseases of the blood &amp; blood-forming organs &amp; certain disorders involving the immune mechanism</b>	<b>0</b>	<b>2.03</b>	<b>1.23</b>
D50-D64	1049	Anaemias	0	1.28	0.8
D65-D89	1050	Remainder of diseases of the blood & blood-forming organs & certain disorders involving the immune mechanism	0	0.75	0.42

Table 14: Standardised mortality rate (ESP) per 100,000 population by gender & cause

ICD-10 code	MTL1	Causes of death	Age standardised mortality rate		
			Males	Females	Persons
<b>E00-E88</b>	<b>1051</b>	<b>Endocrine, nutritional &amp; metabolic diseases</b>	<b>29.27</b>	<b>24.62</b>	<b>26.68</b>
E10-E14	1052	Diabetes mellitus	27.03	20.51	23.26
E00-E07,E15-E34,E50-E88	1054	Remainder of endocrine, nutritional & metabolic diseases	2.24	4.11	3.42
<b>F01-F99</b>	<b>1055</b>	<b>Mental &amp; behavioural disorders</b>	<b>8.25</b>	<b>15.27</b>	<b>12.87</b>
F10-F19	1056	Mental & behavioural disorders due to psychoactive substance use	1.05	0	0.53
F01-F09,F20-F99	1057	Remainder of mental & behavioural disorders	7.2	15.27	12.35
<b>G00-G98</b>	<b>1058</b>	<b>Disorders of the nervous system</b>	<b>21.22</b>	<b>8.46</b>	<b>14.03</b>
G30	1060	Alzheimer's disease	1.04	0.68	0.8
G04-G25, G31-G98	1061	Remainder of diseases of the nervous system	20.17	7.77	13.23
<b>I00-I99</b>	<b>1064</b>	<b>Diseases of the circulatory system</b>	<b>294.4</b>	<b>221.82</b>	<b>255.36</b>
I00-I09	1065	Acute rheumatic fever & chronic rheumatic heart diseases	0.95	1.89	1.48
I10-I14	1066	Hypertensive diseases	2.81	5.81	4.74
I20-I25	1067	Ischaemic heart diseases	173.41	99.25	131.93
I26-I51	1068	Other heart diseases	34.68	41.88	39.43
I60-I69	1069	Cerebrovascular diseases	68.41	65.47	67.29
I70	1070	Atherosclerosis	5.44	4.38	4.93
I71-I99	1071	Remainder of diseases of the circulatory system	8.7	3.14	5.57
<b>J00-J98</b>	<b>1072</b>	<b>Diseases of the respiratory system</b>	<b>98.12</b>	<b>47.23</b>	<b>67.32</b>
J10-J11	1073	Influenza	0.38	0.33	0.34
J12-J18	1074	Pneumonia	25.81	11.65	16.6
J20-J22	1075	Other acute lower respiratory infections	19.93	19	19.27

Table 14: Standardised mortality rate (ESP) per 100,000 population by gender &amp; cause

ICD-10 code	MTL1	Causes of death	Age standardised mortality rate		
			Males	Females	Persons
J40-J47	1076	Chronic lower respiratory diseases	43.49	8	22.37
J00-J06,J30-J39,J60-98	1077	Remainder of diseases of the respiratory system	8.51	8.25	8.75
<b>K00-K92</b>	<b>1078</b>	<b>Diseases of the digestive system</b>	<b>30.26</b>	<b>23.79</b>	<b>26.84</b>
K25-K27	1079	Gastric and duodenal ulcer	0.76	1.13	0.97
K70-K76	1080	Diseases of the liver	8.36	3.96	6.09
K00-K22, K28-K66, K80-K92	1081	Remainder of diseases of the digestive system	21.14	18.7	19.77
<b>L00-L98</b>	<b>1082</b>	<b>Diseases of the skin and subcutaneous tissue</b>	<b>9.53</b>	<b>11.42</b>	<b>10.7</b>
<b>M00-M99</b>	<b>1083</b>	<b>Diseases of the musculoskeletal system &amp; connective tissue</b>	<b>1.93</b>	<b>4.62</b>	<b>3.3</b>
<b>N00-N98</b>	<b>1084</b>	<b>Diseases of the genitourinary system</b>	<b>13.84</b>	<b>5.73</b>	<b>8.87</b>
N00-N15	1085	Glomerular & renal tubulo-interstitial diseases	1.52	0.91	1.14
N17-N98	1086	Remainder of diseases of the genitourinary system	12.32	4.82	7.73
<b>P00-P96</b>	<b>1092</b>	<b>Certain conditions originating in the perinatal period</b>	<b>4.33</b>	<b>4.01</b>	<b>4.18</b>
<b>Q00-Q99</b>	<b>1093</b>	<b>Congenital malformations, deformations &amp; chromosomal abnormalities</b>	<b>7.48</b>	<b>7.98</b>	<b>7.77</b>
<b>R00-R99</b>	<b>1094</b>	<b>Symptoms, signs &amp; abnormal clinical &amp; laboratory findings not elsewhere classified</b>	<b>3.63</b>	<b>2.67</b>	<b>3.15</b>
<b>V01-Y89</b>	<b>1095</b>	<b>External causes of morbidity &amp; mortality</b>	<b>32.67</b>	<b>21.93</b>	<b>27.6</b>
V01-V99	1096	Transport accidents	6.21	1.27	3.81
W00-W19	1097	Falls	10.46	10.46	10.76
W65-W74	1098	Accidental drowning & submersion	0.48	0.8	0.64
X00-X09	1099	Exposure to smoke, fire & flames	0.47	0	0.19
X40-X49	1100	Accidental poisoning by & exposure to noxious substances	2.34	0.48	1.43

Table 14: Standardised mortality rate (ESP) per 100,000 population by gender & cause

ICD-10 code	MTL1	Causes of death	Age standardised mortality rate		
			Males	Females	Persons
X60-X84	1101	Intentional self-harm	6.51	4.38	5.38
X85-Y09	1102	Assault	0.94	1.79	1.37
W20-W64, W75-W99, X10-X39, X50-X59, Y10- Y89	1103	All other external causes	5.26	2.75	4.02

Table 14: Standardised mortality rate (ESP) per 100,000 population by gender &amp; cause

**Table 15: Deaths by specific cause, age group and gender**

ICD-10 Code	Cause of Death	sex	Age in Years											Total
			<1	1-	5-	15-	25-	35-	45-	55-	65-	75-	85+	
	<b>All causes</b>	T	23	8	6	27	25	40	130	295	652	1079	714	2999
		M	14	3	3	18	17	29	76	180	375	510	266	1491
		F	9	5	3	9	8	11	54	115	277	569	448	1508
A00-B99	<b>Certain infectious &amp; parasitic diseases</b>	M	0	0	0	1	1	2	1	0	1	1	1	8
		F	0	0	1	0	0	0	1	0	0	2	1	5
A27	Leptospirosis	M	0	0	0	1	0	0	0	0	0	0	0	1
		F	0	0	0	0	0	0	0	0	0	0	0	0
A39	Meningococcal infection	M	0	0	0	0	0	1	0	0	0	0	0	1
		F	0	0	1	0	0	0	1	0	0	0	0	2
A41	Other septicaemia	M	0	0	0	0	0	0	0	0	1	0	1	2
		F	0	0	0	0	0	0	0	0	0	2	0	2
B01	Varicella (chicken pox)	M	0	0	0	0	1	0	0	0	0	0	0	1
		F	0	0	0	0	0	0	0	0	0	0	0	0
B18	Chronic viral hepatitis	M	0	0	0	0	0	0	0	0	0	1	0	1
		F	0	0	0	0	0	0	0	0	0	0	0	0
B24	Unspecified human immunodeficiency virus (HIV)	M	0	0	0	0	0	1	1	0	0	0	0	2
		F	0	0	0	0	0	0	0	0	0	0	0	0
B90	Sequelae of tuberculosis	M	0	0	0	0	0	0	0	0	0	0	0	0
		F	0	0	0	0	0	0	0	0	0	0	1	1
C00-D48	<b>Neoplasms</b>	M	0	0	3	2	4	5	32	73	115	130	32	396
		F	0	3	1	1	4	6	28	65	92	91	37	328
C00-C97	<b>Malignant neoplasms</b>	M	0	0	3	2	4	5	31	71	114	124	32	386
		F	0	2	1	1	4	6	28	65	91	89	36	323
C02	Malignant neoplasm of other & unspecified parts of tongue	M	0	0	0	0	0	0	0	0	1	0	0	1
		F	0	0	0	0	0	0	0	0	0	0	0	0
C07	Malignant neoplasm of parotid gland	M	0	0	0	0	0	0	0	1	1	0	1	3
		F	0	0	0	0	0	0	0	0	1	0	0	1
C10	Malignant neoplasm of oropharynx	M	0	0	0	0	0	0	0	1	0	0	0	1
		F	0	0	0	0	0	0	0	0	0	1	0	1

## Annual Mortality Report 2004

ICD-10 Code	Cause of Death	sex	Age in Years											Total
			<1	1-	5-	15-	25-	35-	45-	55-	65-	75-	85+	
C11	Malignant neoplasm of nasopharynx	M	0	0	0	0	0	1	0	2	0	0	0	3
		F	0	0	0	0	0	0	1	1	0	0	0	2
C14	Malignant neoplasm of other & ill-defined sites of lip, oral cavity & pharynx	M	0	0	0	0	0	0	0	0	1	0	0	1
		F	0	0	0	0	0	0	0	0	1	0	0	1
C15	Malignant neoplasm of oesophagus	M	0	0	0	0	0	0	1	1	0	1	0	3
		F	0	0	0	0	0	0	0	0	1	1	0	2
C16	Malignant neoplasm of stomach	M	0	0	0	0	0	0	1	3	9	10	4	27
		F	0	0	0	0	0	1	2	1	1	6	5	16
C17	Malignant neoplasm of small intestine	M	0	0	0	0	0	0	1	1	0	0	0	2
		F	0	0	0	0	0	0	0	0	0	0	0	0
C18	Malignant neoplasm of colon	M	0	0	0	0	0	0	2	7	8	11	0	28
		F	0	0	0	0	0	1	1	6	9	11	3	31
C19	Malignant neoplasm of rectosigmoid junction	M	0	0	0	0	0	0	1	0	0	1	0	2
		F	0	0	0	0	0	0	0	1	2	0	0	3
C20	Malignant neoplasm of rectum	M	0	0	0	0	0	0	0	0	5	3	0	8
		F	0	0	0	0	0	0	0	2	4	0	1	7
C22	Malignant neoplasm of liver & Intrahepatic bile ducts	M	0	0	0	0	0	0	0	2	2	3	2	9
		F	0	0	0	0	0	0	2	1	2	1	0	6
C23	Malignant neoplasm of gallbladder	M	0	0	0	0	0	0	0	0	0	0	0	0
		F	0	0	0	0	0	0	0	1	0	0	1	2
C24	Malignant neoplasm of other & unspecified parts of biliary tract	M	0	0	0	0	0	0	0	1	0	0	0	1
		F	0	0	0	0	0	0	0	1	0	0	0	1
C25	Malignant neoplasm of pancreas	M	0	0	0	0	0	0	5	5	9	5	1	25
		F	0	0	0	0	0	0	3	4	6	10	1	24
C30	Malignant neoplasm of nasal cavity & middle ear	M	0	0	0	0	0	0	0	0	0	0	1	1
		F	0	0	0	0	0	0	0	0	0	0	0	0
C32	Malignant neoplasm of larynx	M	0	0	0	0	0	0	0	2	1	2	0	5
		F	0	0	0	0	0	0	0	0	0	0	0	0
C34	Malignant neoplasm of Bronchus & lung	M	0	0	0	0	0	0	6	26	39	30	6	107
		F	0	0	0	0	0	0	1	6	4	4	1	16

Table 15: Deaths by specific cause, age group and gender

ICD-10 Code	Cause of Death	sex	Age in Years											Total
			<1	1-	5-	15-	25-	35-	45-	55-	65-	75-	85+	
C37	Malignant neoplasm of thymus	M	0	0	0	0	0	0	1	0	0	0	0	1
		F	0	0	0	0	0	0	0	0	0	0	0	0
C38	Malignant neoplasm of heart, mediastinum & pleura	M	0	0	0	0	0	0	0	0	0	0	0	0
		F	0	0	0	0	0	0	0	0	0	1	0	1
C41	Malignant neoplasm of bone & articular cartilage of other & unspecified sites	M	0	0	0	0	0	0	1	0	0	0	0	1
		F	0	0	0	0	0	0	0	0	0	0	0	0
C43	Malignant melanoma of skin	M	0	0	0	0	0	0	0	1	0	0	0	1
		F	0	0	0	0	0	0	0	1	1	3	1	6
C44	Other malignant neoplasms of skin	M	0	0	0	0	0	0	0	0	0	3	0	3
		F	0	0	0	0	0	0	0	0	0	0	0	0
C45	Mesothelioma	M	0	0	0	0	0	0	0	1	2	2	0	5
		F	0	0	0	0	0	0	0	0	0	0	0	0
C47	Malignant neoplasm of peripheral nerves & autonomic nervous system	M	0	0	0	0	0	0	0	0	0	1	0	1
		F	0	0	0	0	0	0	0	0	0	0	0	0
C48	Malignant neoplasm of retroperitoneum & peritoneum	M	0	0	0	0	0	0	0	0	0	0	0	0
		F	0	0	0	0	0	0	0	0	0	1	0	1
C49	Malignant neoplasm of other connective & soft tissue	M	0	0	0	0	0	0	0	0	0	0	0	0
		F	0	0	0	0	0	0	0	0	0	1	0	1
C50	Malignant neoplasm of breast	M	0	0	0	0	0	0	0	1	0	0	0	1
		F	0	0	0	0	1	2	7	16	11	16	8	61
C51	Malignant neoplasm of vulva	F	0	0	0	0	0	0	0	0	1	1	1	3
C53	Malignant neoplasm of cervix uteri	F	0	0	0	0	1	1	2	1	1	0	0	6
C54	Malignant neoplasm of corpus uteri	F	0	0	0	0	0	0	1	2	1	0	4	
C55	Malignant neoplasm of uterus, part unspecified	F	0	0	0	0	0	0	1	2	3	1	0	7
C56	Malignant neoplasm of ovary	F	0	0	0	0	0	0	3	9	12	4	0	28

Table 15: Deaths by specific cause, age group and gender

## Annual Mortality Report 2004

ICD-10 Code	Cause of Death	sex	Age in Years											Total	
			<1	1-	5-	15-	25-	35-	45-	55-	65-	75-	85+		
C61	Malignant neoplasm of prostate	M	0	0	0	0	0	0	0	0	4	6	17	7	34
C62	Malignant neoplasm of testis	M	0	0	0	0	0	0	0	0	0	0	0	1	1
C64	Malignant neoplasm of kidney, except renal pelvis	M	0	0	0	0	0	0	1	4	3	5	0	13	
		F	0	0	0	0	0	1	0	1	2	3	0	7	
C67	Malignant neoplasm of bladder	M	0	0	0	0	0	0	0	3	8	6	5	22	
		F	0	0	0	0	0	0	1	0	1	1	3	6	
C71	Malignant neoplasm of brain	M	0	0	1	1	0	0	2	1	0	1	0	6	
		F	0	1	1	0	0	0	0	3	3	1	0	9	
C73	Malignant neoplasm of thyroid gland	M	0	0	0	0	0	0	0	0	0	0	0	0	
		F	0	0	0	0	0	0	0	0	3	1	1	5	
C74	Malignant neoplasm of adrenal gland	M	0	0	0	0	0	0	0	0	0	0	0	0	
		F	0	1	0	0	0	0	0	0	0	0	0	1	
C76	Malignant neoplasm of other & ill-defined sites	M	0	0	0	0	0	0	0	0	0	1	0	1	
		F	0	0	0	0	0	0	0	1	0	2	0	3	
C79	Secondary malignant neoplasm of other sites	M	0	0	0	0	0	0	0	0	0	1	0	1	
		F	0	0	0	0	0	0	0	0	0	0	0	0	
C80	Malignant neoplasm without specification of site	M	0	0	0	1	1	3	1	1	9	11	4	31	
		F	0	0	0	0	1	0	2	3	10	10	6	32	
C81	Hodgkin's disease	M	0	0	0	0	0	0	1	0	0	0	0	1	
		F	0	0	0	1	0	0	0	0	1	1	0	3	
C83	Diffuse non-Hodgkin's lymphoma	M	0	0	0	0	1	0	0	1	0	0	0	2	
		F	0	0	0	0	0	0	0	0	0	0	0	0	
C84	Peripheral & cutaneous T-cell lymphoma	M	0	0	0	0	0	0	0	0	1	0	0	1	
		F	0	0	0	0	0	0	0	0	1	0	0	1	
C85	Other & unspecified types of non-Hodgkin's lymphoma	M	0	0	0	0	0	1	2	0	2	4	0	9	
		F	0	0	0	0	0	0	2	2	4	4	2	14	
C90	Multiple myeloma & malignant plasma cell neoplasms	M	0	0	0	0	0	0	1	2	2	3	0	8	
		F	0	0	0	0	0	0	0	1	3	2	0	6	
C91	Lymphoid leukaemia	M	0	0	1	0	1	0	1	0	1	2	0	6	
		F	0	0	0	0	1	0	0	0	0	1	1	3	

Table 15: Deaths by specific cause, age group and gender



ICD-10 Code	Cause of Death	sex	Age in Years										Total	
			<1	1-	5-	15-	25-	35-	45-	55-	65-	75-		85+
C92	Myeloid leukaemia	M	0	0	1	0	1	0	2	0	3	1	0	8
		F	0	0	0	0	0	0	0	0	1	0	1	2
C95	Leukaemia of unspecified cell type	M	0	0	0	0	0	0	1	0	1	0	0	2
		F	0	0	0	0	0	0	0	0	0	0	0	0
<b>D10-D36</b>	<b>Benign neoplasms</b>	<b>M</b>	<b>0</b>	<b>0</b>	<b>0</b>	<b>0</b>	<b>0</b>	<b>0</b>	<b>1</b>	<b>0</b>	<b>0</b>	<b>0</b>	<b>0</b>	<b>1</b>
		<b>F</b>	<b>0</b>	<b>0</b>	<b>0</b>	<b>0</b>	<b>0</b>	<b>0</b>	<b>0</b>	<b>0</b>	<b>0</b>	<b>0</b>	<b>1</b>	<b>1</b>
D32	Benign neoplasm of meninges	M	0	0	0	0	0	0	0	0	0	0	0	0
		F	0	0	0	0	0	0	0	0	0	0	1	1
D33	Benign neoplasm of brain & other parts of central nervous system	M	0	0	0	0	0	0	1	0	0	0	0	1
		F	0	0	0	0	0	0	0	0	0	0	0	0
<b>D37-D48</b>	<b>Neoplasms of uncertain or unknown behaviour</b>	<b>M</b>	<b>0</b>	<b>0</b>	<b>0</b>	<b>0</b>	<b>0</b>	<b>0</b>	<b>0</b>	<b>2</b>	<b>1</b>	<b>6</b>	<b>0</b>	<b>9</b>
		<b>F</b>	<b>0</b>	<b>1</b>	<b>0</b>	<b>0</b>	<b>0</b>	<b>0</b>	<b>0</b>	<b>0</b>	<b>1</b>	<b>2</b>	<b>0</b>	<b>4</b>
D41	Neoplasm of uncertain or unknown behaviour of urinary organs	M	0	0	0	0	0	0	0	0	0	1	0	1
		F	0	0	0	0	0	0	0	0	0	0	0	0
D43	Neoplasm of uncertain or unknown behaviour of brain & central nervous system	M	0	0	0	0	0	0	0	0	1	0	0	1
		F	0	1	0	0	0	0	0	0	0	1	0	2
D45	Polycythaemia vera	M	0	0	0	0	0	0	0	0	0	2	0	2
		F	0	0	0	0	0	0	0	0	0	0	0	0
D46	Myelodysplastic syndromes	M	0	0	0	0	0	0	0	2	0	2	0	4
		F	0	0	0	0	0	0	0	0	1	0	0	1
D47	Other neoplasms of uncertain or unknown behaviour of lymphoid, haematopoietic & related tissue	M	0	0	0	0	0	0	0	0	0	1	0	1
		F	0	0	0	0	0	0	0	0	0	0	0	0
D48	Neoplasm of uncertain or unknown behaviour of other & unspecified sites	M	0	0	0	0	0	0	0	0	0	0	0	0
		F	0	0	0	0	0	0	0	0	0	1	0	1
<b>D50-D89</b>	<b>Diseases of the blood &amp; blood forming organs &amp; certain disorders involving the immune mechanism</b>	<b>M</b>	<b>0</b>	<b>0</b>	<b>0</b>	<b>0</b>	<b>0</b>	<b>0</b>	<b>0</b>	<b>0</b>	<b>0</b>	<b>0</b>	<b>0</b>	<b>0</b>
		<b>F</b>	<b>0</b>	<b>0</b>	<b>0</b>	<b>0</b>	<b>0</b>	<b>0</b>	<b>0</b>	<b>0</b>	<b>1</b>	<b>3</b>	<b>2</b>	<b>6</b>

Table 15: Deaths by specific cause, age group and gender

ICD-10 Code	Cause of Death	sex	Age in Years											Total	
			<1	1-	5-	15-	25-	35-	45-	55-	65-	75-	85+		
D59	Acquired haemolytic anaemia	M	0	0	0	0	0	0	0	0	0	0	0	0	0
		F	0	0	0	0	0	0	0	0	0	0	1	0	1
D64	Other anaemias	M	0	0	0	0	0	0	0	0	0	0	0	0	0
		F	0	0	0	0	0	0	0	0	0	0	1	2	3
D70	Agranulocytosis	M	0	0	0	0	0	0	0	0	0	0	0	0	0
		F	0	0	0	0	0	0	0	0	0	1	0	0	1
D75	Other diseases of blood & blood forming organs	M	0	0	0	0	0	0	0	0	0	0	0	0	0
		F	0	0	0	0	0	0	0	0	0	0	1	0	1
<b>E00-E90</b>	<b>Endocrine, nutritional &amp; metabolic diseases</b>	<b>M</b>	<b>0</b>	<b>1</b>	<b>0</b>	<b>0</b>	<b>0</b>	<b>1</b>	<b>2</b>	<b>6</b>	<b>21</b>	<b>19</b>	<b>8</b>	<b>58</b>	
		<b>F</b>	<b>0</b>	<b>0</b>	<b>0</b>	<b>0</b>	<b>0</b>	<b>0</b>	<b>2</b>	<b>9</b>	<b>14</b>	<b>34</b>	<b>13</b>	<b>72</b>	
E03	Other hypothyroidism	M	0	0	0	0	0	0	0	0	0	0	0	0	0
		F	0	0	0	0	0	0	0	0	0	0	2	0	2
E11	Non-insulin-dependent diabetes mellitus	M	0	0	0	0	0	0	0	1	0	1	1	3	3
		F	0	0	0	0	0	0	0	0	0	0	1	0	1
E14	Unspecified diabetes mellitus	M	0	0	0	0	0	0	1	5	20	18	7	51	51
		F	0	0	0	0	0	0	1	6	12	29	11	59	59
E66	Obesity	M	0	0	0	0	0	0	1	0	1	0	0	2	2
		F	0	0	0	0	0	0	1	3	2	1	0	7	7
E75	Disorders of sphingolipid metabolism & other lipid storage disorders	M	0	1	0	0	0	0	0	0	0	0	0	1	1
		F	0	0	0	0	0	0	0	0	0	0	0	0	0
E78	Disorders of lipoprotein metabolism & other lipidaemias	M	0	0	0	0	0	1	0	0	0	0	0	1	1
		F	0	0	0	0	0	0	0	0	0	0	0	0	0
E86	Volume depletion	M	0	0	0	0	0	0	0	0	0	0	0	0	0
		F	0	0	0	0	0	0	0	0	0	0	1	2	3
<b>F00-F99</b>	<b>Mental &amp; behavioural disorders</b>	<b>M</b>	<b>0</b>	<b>0</b>	<b>0</b>	<b>0</b>	<b>0</b>	<b>1</b>	<b>2</b>	<b>1</b>	<b>0</b>	<b>9</b>	<b>4</b>	<b>17</b>	
		<b>F</b>	<b>0</b>	<b>0</b>	<b>0</b>	<b>0</b>	<b>0</b>	<b>0</b>	<b>0</b>	<b>1</b>	<b>4</b>	<b>20</b>	<b>23</b>	<b>48</b>	
F03	Unspecified dementia	M	0	0	0	0	0	0	0	0	0	9	4	13	13
		F	0	0	0	0	0	0	0	1	3	20	22	46	46
F06	Other mental disorders due_ to brain damage & dysfunction & to physical disease	M	0	0	0	0	0	0	0	0	0	0	0	0	0
		F	0	0	0	0	0	0	0	0	0	0	1	1	1

Table 15: Deaths by specific cause, age group and gender

ICD-10 Code	Cause of Death	sex	Age in Years										Total	
			<1	1-	5-	15-	25-	35-	45-	55-	65-	75-		85+
F10	Mental & behavioural disorders due to use of alcohol	M	0	0	0	0	0	1	1	0	0	0	0	2
		F	0	0	0	0	0	0	0	0	0	0	0	0
F32	Depressive episode	M	0	0	0	0	0	0	0	0	0	0	0	
		F	0	0	0	0	0	0	0	0	1	0	0	1
F79	Unspecified mental retardation	M	0	0	0	0	0	0	1	1	0	0	2	
		F	0	0	0	0	0	0	0	0	0	0	0	0
<b>G00-G99</b>	<b>Diseases of the nervous system</b>	<b>M</b>	<b>1</b>	<b>2</b>	<b>0</b>	<b>1</b>	<b>1</b>	<b>1</b>	<b>3</b>	<b>4</b>	<b>13</b>	<b>11</b>	<b>4</b>	<b>41</b>
		<b>F</b>	<b>0</b>	<b>1</b>	<b>0</b>	<b>0</b>	<b>0</b>	<b>1</b>	<b>1</b>	<b>3</b>	<b>2</b>	<b>12</b>	<b>3</b>	<b>23</b>
G10	Huntington's disease	M	0	0	0	0	0	0	1	1	1	1	0	4
		F	0	0	0	0	0	0	0	1	0	1	0	2
G12	Spinal muscular atrophy & related syndromes	M	0	0	0	0	0	0	0	1	2	0	1	4
		F	0	0	0	0	0	0	1	0	0	0	0	1
G20	Parkinson's disease	M	0	0	0	0	0	0	0	0	8	7	2	17
		F	0	0	0	0	0	0	0	0	2	8	2	12
G30	Alzheimer's disease	M	0	0	0	0	0	0	0	0	0	1	1	2
		F	0	0	0	0	0	0	0	0	0	1	1	2
G31	Other degenerative diseases of nervous system, not elsewhere classified	M	0	0	0	0	0	0	0	0	0	0	0	0
		F	0	0	0	0	0	0	0	0	0	1	0	1
G35	Multiple sclerosis	M	0	0	0	0	0	0	0	0	0	0	0	0
		F	0	0	0	0	0	1	0	1	0	0	0	2
G37	Other demyelinating diseases of central nervous system	M	0	0	0	0	0	1	0	0	0	0	0	1
		F	0	0	0	0	0	0	0	0	0	0	0	0
G40	Epilepsy	M	0	0	0	0	0	0	1	1	0	1	0	3
		F	0	0	0	0	0	0	0	0	0	0	0	0
G41	Status epilepticus	M	0	0	0	0	0	0	0	0	0	0	0	0
		F	0	0	0	0	0	0	0	1	0	0	0	1
G45	Transient cerebral ischaemic attacks & related syndromes	M	0	0	0	0	0	0	0	0	1	0	0	1
		F	0	0	0	0	0	0	0	0	0	0	0	0
G71	Primary disorders of muscles	M	1	0	0	0	0	0	1	0	0	0	0	2
		F	0	0	0	0	0	0	0	0	0	0	0	0

Table 15: Deaths by specific cause, age group and gender

Annual Mortality Report 2004

ICD-10 Code	Cause of Death	sex	Age in Years											Total
			<1	1-	5-	15-	25-	35-	45-	55-	65-	75-	85+	
G80	Infantile cerebral palsy	M	0	1	0	1	1	0	0	1	0	0	0	4
		F	0	1	0	0	0	0	0	0	0	0	0	1
G82	Paraplegia & tetraplegia	M	0	0	0	0	0	0	0	0	0	0	0	0
		F	0	0	0	0	0	0	0	0	0	1	0	1
G90	Disorders of autonomic nervous system	M	0	0	0	0	0	0	0	0	1	0	0	1
		F	0	0	0	0	0	0	0	0	0	0	0	0
G93	Other disorders of brain	M	0	1	0	0	0	0	0	0	0	0	0	1
		F	0	0	0	0	0	0	0	0	0	0	0	0
G95	Other disorders of brain in disease classified elsewhere	M	0	0	0	0	0	0	0	0	0	1	0	1
		F	0	0	0	0	0	0	0	0	0	0	0	0
<b>I00-I99</b>	<b>Diseases of the circulatory system</b>	<b>M</b>	<b>0</b>	<b>0</b>	<b>0</b>	<b>0</b>	<b>4</b>	<b>7</b>	<b>17</b>	<b>67</b>	<b>150</b>	<b>229</b>	<b>115</b>	<b>589</b>
		<b>F</b>	<b>0</b>	<b>0</b>	<b>1</b>	<b>1</b>	<b>0</b>	<b>2</b>	<b>7</b>	<b>21</b>	<b>111</b>	<b>277</b>	<b>246</b>	<b>666</b>
I05	Rheumatic mitral valve diseases	M	0	0	0	0	0	0	0	0	0	0	0	0
		F	0	0	0	0	0	0	0	0	0	1	0	1
I06	Rheumatic aortic valve diseases	M	0	0	0	0	0	0	1	0	0	0	0	1
		F	0	0	0	0	0	0	0	0	0	0	0	0
I08	Multiple valve diseases	M	0	0	0	0	0	0	0	0	0	0	0	0
		F	0	0	0	0	0	0	0	0	2	0	0	2
I09	Other rheumatic heart diseases	M	0	0	0	0	0	0	0	0	0	1	0	1
		F	0	0	0	0	0	1	0	0	1	0	0	2
I10	Essential (primary) hypertension	M	0	0	0	0	0	0	0	0	0	1	0	1
		F	0	0	0	0	0	0	0	1	2	1	2	6
I11	Hypertensive heart disease	M	0	0	0	0	0	0	3	0	0	2	0	5
		F	0	0	0	0	0	0	0	0	3	1	1	5
I12	Hypertensive renal disease	M	0	0	0	0	0	0	0	0	0	0	0	0
		F	0	0	0	0	0	0	0	0	0	1	2	3
I13	Hypertensive heart & renal disease	M	0	0	0	0	0	0	0	0	0	0	0	0
		F	0	0	0	0	0	0	0	0	1	0	1	2
I21	Acute myocardial infarction	M	0	0	0	0	2	4	10	32	59	70	33	210
		F	0	0	0	0	0	1	1	7	34	64	32	139

Table 15: Deaths by specific cause, age group and gender

ICD-10 Code	Cause of Death	sex	Age in Years											Total
			<1	1-	5-	15-	25-	35-	45-	55-	65-	75-	85+	
I25	Chronic ischaemic heart diseases	M	0	0	0	0	1	1	2	17	32	51	32	136
		F	0	0	0	0	0	0	1	2	22	71	66	162
I26	Pulmonary embolism	M	0	0	0	0	0	0	0	0	1	2	0	3
		F	0	0	0	0	0	0	0	1	0	1	2	4
I31	Other diseases of pericardium	M	0	0	0	0	0	0	0	0	1	0	0	1
		F	0	0	0	0	0	0	0	1	0	0	0	1
I33	Acute & subacute endocarditis	M	0	0	0	0	0	0	0	1	0	1	0	2
		F	0	0	0	0	0	0	0	0	0	0	0	0
I34	Nonrheumatic mitral valve disorders	M	0	0	0	0	0	0	0	1	0	1	0	2
		F	0	0	0	0	0	0	0	0	2	0	0	2
I35	Nonrheumatic aortic valve disorders	M	0	0	0	0	0	0	0	0	2	3	1	6
		F	0	0	0	0	0	0	0	1	1	1	1	4
I38	Endocarditis, valve unspecified	M	0	0	0	0	0	0	0	0	1	0	0	1
		F	0	0	0	0	0	0	0	0	1	0	1	2
I42	Cardiomyopathy	M	0	0	0	0	0	0	0	0	0	0	0	0
		F	0	0	1	0	0	0	0	0	0	0	0	1
I45	Other conduction disorders	M	0	0	0	0	0	0	0	0	0	0	0	0
		F	0	0	0	0	0	0	0	0	0	0	1	1
I46	Cardiac arrest	M	0	0	0	0	0	0	0	1	0	0	0	1
		F	0	0	0	0	0	0	0	0	0	0	0	0
I48	Atrial fibrillation & flutter	M	0	0	0	0	0	0	0	0	1	2	4	7
		F	0	0	0	0	0	0	0	0	0	7	4	11
I50	Heart failure	M	0	0	0	0	0	0	0	3	6	17	16	42
		F	0	0	0	1	0	0	1	0	6	35	50	93
I51	Complications & ill-defined descriptions of heart disease	M	0	0	0	0	0	0	0	0	0	1	1	2
		F	0	0	0	0	0	0	0	1	0	0	5	6
I60	Subarachnoid haemorrhage	M	0	0	0	0	0	0	0	1	0	0	0	1
		F	0	0	0	0	0	0	1	1	1	1	0	4
I61	Intracerebral haemorrhage	M	0	0	0	0	0	1	1	0	4	7	1	14
		F	0	0	0	0	0	0	1	1	2	11	4	19

Table 15: Deaths by specific cause, age group and gender

ICD-10 Code	Cause of Death	sex	Age in Years											Total	
			<1	1-	5-	15-	25-	35-	45-	55-	65-	75-	85+		
I62	Other nontraumatic intracranial haemorrhage	M	0	0	0	0	0	0	0	0	0	1	0	1	2
		F	0	0	0	0	0	0	0	0	0	0	1	0	1
I63	Cerebral infarction	M	0	0	0	0	0	0	1	0	0	4	5	0	10
		F	0	0	0	0	0	0	0	0	0	7	8	7	22
I64	Stroke, not specified as haemorrhage or infarction	M	0	0	0	0	0	0	0	0	6	28	39	16	89
		F	0	0	0	0	0	0	1	5	19	58	53	136	
I67	Other cerebrovascular diseases	M	0	0	0	0	0	0	0	0	0	3	8	6	17
		F	0	0	0	0	0	0	0	0	0	1	3	2	6
I69	Sequelae of cerebrovascular disease	M	0	0	0	0	0	0	0	0	0	3	1	1	5
		F	0	0	0	0	0	0	0	0	0	3	3	2	8
I70	Atherosclerosis	M	0	0	0	0	0	0	0	0	0	2	7	2	11
		F	0	0	0	0	0	0	0	0	0	1	6	7	14
I71	Aortic aneurysm & dissection	M	0	0	0	0	0	0	0	0	2	2	4	1	9
		F	0	0	0	0	0	0	0	0	0	0	0	0	0
I73	Other peripheral vascular diseases	M	0	0	0	0	0	0	0	0	1	0	1	0	2
		F	0	0	0	0	0	0	0	0	0	1	0	0	1
I74	Arterial embolism & thrombosis	M	0	0	0	0	0	0	0	0	0	0	2	0	2
		F	0	0	0	0	0	0	0	0	0	0	0	3	3
I77	Other disorders of arteries & arterioles	M	0	0	0	0	0	0	0	0	0	0	1	0	1
		F	0	0	0	0	0	0	0	0	0	1	1	0	2
I80	Phlebitis and thrombophlebitis	M	0	0	0	0	0	0	0	0	2	0	2	0	4
		F	0	0	0	0	0	0	1	0	0	0	2	0	3
I81	Portal vein thrombosis	M	0	0	0	0	1	0	0	0	0	0	0	0	1
		F	0	0	0	0	0	0	0	0	0	0	0	0	0
<b>J00-J99</b>	<b>Diseases of the respiratory system</b>	<b>M</b>	<b>0</b>	<b>0</b>	<b>0</b>	<b>1</b>	<b>0</b>	<b>1</b>	<b>2</b>	<b>11</b>	<b>45</b>	<b>58</b>	<b>65</b>	<b>183</b>	
		<b>F</b>	<b>0</b>	<b>0</b>	<b>0</b>	<b>0</b>	<b>0</b>	<b>1</b>	<b>0</b>	<b>5</b>	<b>22</b>	<b>55</b>	<b>57</b>	<b>140</b>	
J11	Influenza, virus not identified	M	0	0	0	0	0	0	0	0	0	1	0	1	
		F	0	0	0	0	0	0	0	0	0	1	0	1	
J18	Pneumonia, organism unspecified	M	0	0	0	0	0	1	0	2	5	10	27	45	
		F	0	0	0	0	0	0	0	2	4	20	10	36	

Table 15: Deaths by specific cause, age group and gender

ICD-10 Code	Cause of Death	sex	Age in Years											Total
			<1	1-	5-	15-	25-	35-	45-	55-	65-	75-	85+	
J20	Acute bronchitis	M	0	0	0	0	0	0	0	1	0	0	0	1
		F	0	0	0	0	0	1	0	0	0	1	2	
J22	Unspecified acute lower respiratory infection	M	0	0	0	0	0	0	0	0	6	11	18	35
		F	0	0	0	0	0	0	0	0	7	15	29	51
J42	Unspecified chronic bronchitis	M	0	0	0	0	0	0	0	1	0	1	2	
		F	0	0	0	0	0	0	0	0	1	0	1	
J43	Emphysema	M	0	0	0	0	0	0	0	1	1	0	2	
		F	0	0	0	0	0	0	0	0	0	1	1	
J44	Other chronic obstructive pulmonary disease	M	0	0	0	0	0	1	3	27	30	18	79	
		F	0	0	0	0	0	0	2	4	2	3	11	
J45	Asthma	M	0	0	0	0	0	0	0	0	0	0	0	
		F	0	0	0	0	0	0	1	0	4	4	9	
J46	Status asthmaticus	M	0	0	0	1	0	0	0	0	0	0	1	
		F	0	0	0	0	0	0	0	0	0	0	0	
J47	Bronchiectasis	M	0	0	0	0	0	0	0	0	0	0	0	
		F	0	0	0	0	0	0	0	1	0	0	1	
J61	Pneumoconiosis due to asbestos & other mineral fibres	M	0	0	0	0	0	0	0	0	1	0	1	
		F	0	0	0	0	0	0	0	0	0	0	0	
J69	Pneumonitis due to solids & liquids	M	0	0	0	0	0	0	0	0	3	0	3	
		F	0	0	0	0	0	0	0	1	4	4	9	
J84	Other interstitial pulmonary diseases	M	0	0	0	0	0	1	5	5	0	1	12	
		F	0	0	0	0	0	0	0	5	7	4	16	
J90	Pleural effusion, not elsewhere classified	M	0	0	0	0	0	0	0	0	1	0	1	
		F	0	0	0	0	0	0	0	0	0	0	0	
<b>K00-K93</b>	<b>Diseases of the digestive system</b>	<b>M</b>	<b>0</b>	<b>0</b>	<b>0</b>	<b>1</b>	<b>0</b>	<b>0</b>	<b>6</b>	<b>9</b>	<b>14</b>	<b>18</b>	<b>12</b>	<b>60</b>
		<b>F</b>	<b>0</b>	<b>0</b>	<b>0</b>	<b>0</b>	<b>0</b>	<b>0</b>	<b>6</b>	<b>1</b>	<b>11</b>	<b>29</b>	<b>22</b>	<b>69</b>
K21	Gastro-oesophageal reflux disease	M	0	0	0	0	0	0	0	0	0	1	1	
		F	0	0	0	0	0	0	0	0	0	0	0	
K25	Gastric ulcer	M	0	0	0	0	0	0	0	0	1	0	1	
		F	0	0	0	0	0	0	0	0	0	0	0	

Table 15: Deaths by specific cause, age group and gender

## Annual Mortality Report 2004

ICD-10 Code	Cause of Death	sex	Age in Years											Total	
			<1	1-	5-	15-	25-	35-	45-	55-	65-	75-	85+		
K26	Duodenal ulcer	M	0	0	0	0	0	0	0	0	0	0	1	0	1
		F	0	0	0	0	0	0	0	0	0	0	2	0	2
K27	Peptic ulcer, site unspecified	M	0	0	0	0	0	0	0	0	0	0	0	0	0
		F	0	0	0	0	0	0	0	0	0	0	2	0	2
K29	Gastritis & duodenitis	M	0	0	0	0	0	0	0	0	0	0	0	1	1
		F	0	0	0	0	0	0	0	0	0	0	0	0	0
K37	Unspecified appendicitis	M	0	0	0	0	0	0	0	0	0	1	0	1	
		F	0	0	0	0	0	0	0	0	0	0	0	0	0
K40	Inguinal hernia	M	0	0	0	0	0	0	0	0	0	0	1	1	
		F	0	0	0	0	0	0	0	0	0	1	0	1	
K42	Umbilical hernia	M	0	0	0	0	0	0	1	0	1	0	0	2	
		F	0	0	0	0	0	0	0	0	0	0	0	0	0
K43	Ventral hernia	M	0	0	0	0	0	0	0	0	0	0	0	0	0
		F	0	0	0	0	0	0	0	0	1	0	0	1	
K51	Ulcerative colitis	M	0	0	0	0	0	0	0	0	0	1	0	1	
		F	0	0	0	0	0	0	0	0	0	0	0	0	0
K52	Other noninfective gastroenteritis & colitis	M	0	0	0	0	0	0	0	0	0	1	0	1	
		F	0	0	0	0	0	0	0	0	0	3	1	4	
K55	Vascular disorders of intestine	M	0	0	0	0	0	0	0	0	1	1	1	3	
		F	0	0	0	0	0	0	1	0	2	3	0	6	
K56	Paralytic ileus & intestinal obstruction without hernia	M	0	0	0	0	0	0	0	0	2	1	0	3	
		F	0	0	0	0	0	0	1	0	1	3	0	5	
K57	Diverticular disease of intestine	M	0	0	0	1	0	0	0	0	0	0	0	1	
		F	0	0	0	0	0	0	0	0	2	4	3	9	
K59	Other functional intestinal disorders	M	0	0	0	0	0	0	0	0	0	0	0	0	0
		F	0	0	0	0	0	0	0	0	1	0	1	2	
K61	Abscess of anal & rectal regions	M	0	0	0	0	0	0	0	1	0	0	0	1	
		F	0	0	0	0	0	0	0	0	0	0	0	0	0
K62	Other diseases of anus & rectum	M	0	0	0	0	0	0	0	0	0	0	0	0	0
		F	0	0	0	0	0	0	0	0	0	1	0	1	

Table 15: Deaths by specific cause, age group and gender



ICD-10 Code	Cause of Death	sex	Age in Years											Total	
			<1	1-	5-	15-	25-	35-	45-	55-	65-	75-	85+		
K63	Other diseases of intestine	M	0	0	0	0	0	0	0	0	0	2	0	0	2
		F	0	0	0	0	0	0	0	0	0	1	1	0	2
K65	Peritonitis	M	0	0	0	0	0	0	0	0	0	0	0	0	0
		F	0	0	0	0	0	0	0	0	0	1	1	1	3
K70	Alcoholic liver disease	M	0	0	0	0	0	0	0	5	7	3	1	0	16
		F	0	0	0	0	0	0	3	1	0	1	0	0	5
K72	Hepatic failure, not elsewhere classified	M	0	0	0	0	0	0	0	0	0	1	0	1	
		F	0	0	0	0	0	0	0	0	0	1	0	1	
K74	Fibrosis & cirrhosis of liver	M	0	0	0	0	0	0	0	0	0	1	0	0	1
		F	0	0	0	0	0	0	0	0	0	2	0	1	3
K76	Other diseases of liver	M	0	0	0	0	0	0	0	0	0	0	0	0	0
		F	0	0	0	0	0	0	0	0	0	0	1	0	1
K80	Cholelithiasis	M	0	0	0	0	0	0	0	0	0	0	3	1	4
		F	0	0	0	0	0	0	0	0	0	0	3	6	9
K81	Cholecystitis	M	0	0	0	0	0	0	0	0	0	3	1	1	5
		F	0	0	0	0	0	0	0	0	0	0	0	0	0
K82	Other diseases of gallbladder	M	0	0	0	0	0	0	0	0	0	0	0	0	0
		F	0	0	0	0	0	0	0	0	0	0	0	1	1
K83	Other diseases of biliary tract	M	0	0	0	0	0	0	0	0	0	0	0	1	1
		F	0	0	0	0	0	0	0	0	0	0	0	1	1
K85	Acute pancreatitis	M	0	0	0	0	0	0	0	0	1	0	3	1	5
		F	0	0	0	0	0	0	1	0	0	0	0	0	1
K92	Other diseases of digestive system	M	0	0	0	0	0	0	0	0	0	1	2	4	7
		F	0	0	0	0	0	0	0	0	0	0	2	7	9
<b>L00-L99</b>	<b>Diseases of the skin &amp; subcutaneous tissue</b>	<b>M</b>	<b>0</b>	<b>0</b>	<b>0</b>	<b>0</b>	<b>0</b>	<b>0</b>	<b>0</b>	<b>0</b>	<b>0</b>	<b>2</b>	<b>9</b>	<b>7</b>	<b>18</b>
		<b>F</b>	<b>0</b>	<b>0</b>	<b>0</b>	<b>0</b>	<b>0</b>	<b>0</b>	<b>1</b>	<b>1</b>	<b>2</b>	<b>15</b>	<b>17</b>	<b>36</b>	
L02	Cutaneous abscess, furuncle & carbuncle	M	0	0	0	0	0	0	0	0	0	0	0	0	0
		F	0	0	0	0	0	0	0	1	0	0	0	0	1
L03	Cellulitis	M	0	0	0	0	0	0	0	0	0	0	0	1	1
		F	0	0	0	0	0	0	0	0	0	0	0	1	1

Table 15: Deaths by specific cause, age group and gender

ICD-10 Code	Cause of Death	sex	Age in Years											Total	
			<1	1-	5-	15-	25-	35-	45-	55-	65-	75-	85+		
L12	Pemphigoid	M	0	0	0	0	0	0	0	0	0	0	0	0	0
		F	0	0	0	0	0	0	0	0	0	0	0	1	1
L40	Psoriasis	M	0	0	0	0	0	0	0	0	0	0	0	0	0
		F	0	0	0	0	0	0	1	0	0	0	0	0	1
L89	Decubitus ulcer	M	0	0	0	0	0	0	0	0	2	9	6	17	
		F	0	0	0	0	0	0	0	0	2	15	15	32	
<b>M00-M99</b>	<b>Diseases of the musculo-skeletal system &amp; connective tissue</b>	<b>M</b>	<b>0</b>	<b>0</b>	<b>0</b>	<b>0</b>	<b>0</b>	<b>0</b>	<b>0</b>	<b>0</b>	<b>1</b>	<b>2</b>	<b>1</b>	<b>4</b>	
		<b>F</b>	<b>0</b>	<b>0</b>	<b>0</b>	<b>0</b>	<b>1</b>	<b>0</b>	<b>0</b>	<b>2</b>	<b>5</b>	<b>5</b>	<b>0</b>	<b>13</b>	
M00	Pyogenic arthritis	M	0	0	0	0	0	0	0	0	0	1	0	1	
		F	0	0	0	0	1	0	0	0	0	1	0	2	
M02	Reactive arthropathies	M	0	0	0	0	0	0	0	0	0	0	0	0	
		F	0	0	0	0	0	0	0	0	0	1	0	1	
M06	Other rheumatoid arthritis	M	0	0	0	0	0	0	0	0	1	0	0	1	
		F	0	0	0	0	0	0	0	0	4	1	0	5	
M15	Polyarthrosis	M	0	0	0	0	0	0	0	0	0	0	1	1	
		F	0	0	0	0	0	0	0	0	0	0	0	0	
M17	Gonarthrosis (arthrosis of knee)	M	0	0	0	0	0	0	0	0	0	0	0	0	
		F	0	0	0	0	0	0	0	0	0	1	0	1	
M31	Other necrotizing vasculopathies	M	0	0	0	0	0	0	0	0	0	0	0	0	
		F	0	0	0	0	0	0	0	1	0	0	0	1	
M34	Systemic sclerosis	M	0	0	0	0	0	0	0	0	0	0	0	0	
		F	0	0	0	0	0	0	0	1	0	0	0	1	
M46	Other inflammatory spondylopathies	M	0	0	0	0	0	0	0	0	0	0	0	0	
		F	0	0	0	0	0	0	0	0	0	1	0	1	
M60	Myositis	M	0	0	0	0	0	0	0	0	0	0	0	0	
		F	0	0	0	0	0	0	0	0	1	0	0	1	
M88	Paget's disease of bone	M	0	0	0	0	0	0	0	0	0	1	0	1	
		F	0	0	0	0	0	0	0	0	0	0	0	0	
<b>N00-N99</b>	<b>Diseases of the genitourinary system</b>	<b>M</b>	<b>0</b>	<b>0</b>	<b>0</b>	<b>0</b>	<b>0</b>	<b>1</b>	<b>0</b>	<b>1</b>	<b>6</b>	<b>9</b>	<b>9</b>	<b>26</b>	
		<b>F</b>	<b>0</b>	<b>0</b>	<b>0</b>	<b>0</b>	<b>1</b>	<b>0</b>	<b>0</b>	<b>0</b>	<b>4</b>	<b>5</b>	<b>6</b>	<b>16</b>	

Table 15: Deaths by specific cause, age group and gender

ICD-10 Code	Cause of Death	sex	Age in Years										Total	
			<1	1-	5-	15-	25-	35-	45-	55-	65-	75-		85+
N04	Nephrotic syndrome	M	0	0	0	0	0	0	0	0	0	0	0	0
		F	0	0	0	0	1	0	0	0	0	0	0	1
N05	Unspecified nephritic syndrome	M	0	0	0	0	0	0	0	0	1	0	0	1
		F	0	0	0	0	0	0	0	0	0	0	0	0
N11	Chronic tubulo-interstitial nephritis	M	0	0	0	0	0	0	0	0	1	0	0	1
		F	0	0	0	0	0	0	0	0	0	0	0	0
N12	Tubulo-interstitial nephritis, not specified as acute or chronic	M	0	0	0	0	0	0	0	0	0	0	0	0
		F	0	0	0	0	0	0	0	0	1	0	0	1
N13	Obstructive & reflux uropathy	M	0	0	0	0	0	0	0	0	1	0	0	1
		F	0	0	0	0	0	0	0	0	0	0	0	0
N17	Acute renal failure	M	0	0	0	0	0	0	0	0	0	1	1	2
		F	0	0	0	0	0	0	0	0	0	0	0	0
N18	Chronic renal failure	M	0	0	0	0	0	1	0	1	2	3	1	8
		F	0	0	0	0	0	0	0	0	3	3	3	9
N19	Unspecified renal failure	M	0	0	0	0	0	0	0	0	1	3	4	8
		F	0	0	0	0	0	0	0	0	0	1	2	3
N26	Unspecified contracted kidney	M	0	0	0	0	0	0	0	0	0	0	0	0
		F	0	0	0	0	0	0	0	0	0	1	0	1
N39	Other disorders of urinary system	M	0	0	0	0	0	0	0	0	0	1	1	2
		F	0	0	0	0	0	0	0	0	0	0	1	1
N40	Hyperplasia of prostate	M	0	0	0	0	0	0	0	0	0	0	1	1
N49	Inflammatory disorders of male genital organs, nec	M	0	0	0	0	0	0	0	0	0	1	1	2
<b>P00-P96</b>	<b>Certain conditions originating in the perinatal period</b>	<b>M</b>	<b>5</b>	<b>0</b>	<b>0</b>	<b>1</b>	<b>0</b>	<b>0</b>	<b>0</b>	<b>0</b>	<b>0</b>	<b>0</b>	<b>0</b>	<b>6</b>
		<b>F</b>	<b>5</b>	<b>0</b>	<b>0</b>	<b>0</b>	<b>0</b>	<b>0</b>	<b>0</b>	<b>0</b>	<b>0</b>	<b>0</b>	<b>0</b>	<b>0</b>
P02	Fetus & newborn affected by complications of placenta, cord & membranes	M	2	0	0	0	0	0	0	0	0	0	0	2
		F	0	0	0	0	0	0	0	0	0	0	0	0

Table 15: Deaths by specific cause, age group and gender

Annual Mortality Report 2004

ICD-10 Code	Cause of Death	sex	Age in Years										Total	
			<1	1-	5-	15-	25-	35-	45-	55-	65-	75-		85+
P07	Disorders related to short gestation & low birth weight, nec	M	1	0	0	0	0	0	0	0	0	0	0	1
		F	0	0	0	0	0	0	0	0	0	0	0	0
P22	Respiratory distress of newborn	M	0	0	0	0	0	0	0	0	0	0	0	0
		F	4	0	0	0	0	0	0	0	0	0	0	4
P25	Interstitial emphysema & related conditions originating in the perinatal period	M	1	0	0	0	0	0	0	0	0	0	0	1
		F	0	0	0	0	0	0	0	0	0	0	0	0
P28	Other respiratory conditions originating in the perinatal period	M	1	0	0	0	0	0	0	0	0	0	0	1
		F	0	0	0	0	0	0	0	0	0	0	0	0
P35	Congenital viral diseases	M	0	0	0	1	0	0	0	0	0	0	0	1
		F	0	0	0	0	0	0	0	0	0	0	0	0
P77	Necrotizing enterocolitis of fetus & newborn	M	0	0	0	0	0	0	0	0	0	0	0	0
		F	1	0	0	0	0	0	0	0	0	0	0	1
<b>Q00-Q99</b>	<b>Congenital malformations, deformations &amp; chromosomal abnormalities</b>	<b>M</b>	<b>7</b>	<b>0</b>	<b>0</b>	<b>0</b>	<b>0</b>	<b>1</b>	<b>1</b>	<b>2</b>	<b>0</b>	<b>0</b>	<b>0</b>	<b>11</b>
		<b>F</b>	<b>4</b>	<b>0</b>	<b>0</b>	<b>2</b>	<b>1</b>	<b>0</b>	<b>3</b>	<b>2</b>	<b>2</b>	<b>1</b>	<b>0</b>	<b>15</b>
Q01	Encephalocele	M	0	0	0	0	0	0	0	0	0	0	0	0
		F	0	0	0	1	0	0	0	0	0	0	0	1
Q04	Other congenital malformations of brain	M	1	0	0	0	0	0	0	0	0	0	0	1
		F	0	0	0	0	0	0	0	0	0	0	0	0
Q20	Congenital malformations of cardiac chambers & connections	M	0	0	0	0	0	0	0	0	0	0	0	0
		F	0	0	0	0	0	0	1	0	0	0	0	1
Q21	Congenital malformations of cardiac septa	M	0	0	0	0	0	0	1	0	0	0	0	1
		F	0	0	0	0	1	0	0	1	0	0	0	2
Q22	Congenital malformations of pulmonary & tricuspid valves	M	0	0	0	0	0	0	0	1	0	0	0	1
		F	0	0	0	0	0	0	0	0	0	0	0	0
Q23	Congenital malformations of aortic & mitral valves	M	1	0	0	0	0	0	0	0	0	0	0	1
		F	0	0	0	0	0	0	0	0	0	0	0	0

Table 15: Deaths by specific cause, age group and gender

ICD-10 Code	Cause of Death	sex	Age in Years										Total	
			<1	1-	5-	15-	25-	35-	45-	55-	65-	75-		85+
Q50	Congenital malformations of ovaries, fallopian tubes & broad ligaments	F	0	0	0	1	0	0	0	0	0	0	0	1
Q60	Renal agenesis & other reduction defects of kidney	M	1	0	0	0	0	0	0	0	0	0	0	1
		F	0	0	0	0	0	0	1	0	0	0	0	1
Q61	Cystic kidney disease	M	0	0	0	0	0	0	0	1	0	0	0	1
		F	0	0	0	0	0	0	1	1	0	1	0	3
Q77	Osteochondrodysplasia with defects of growth of tubular bone and spine	M	1	0	0	0	0	0	0	0	0	0	0	1
		F	0	0	0	0	0	0	0	0	0	0	0	0
Q79	Congenital malformations of musculoskeletal system, nec	M	1	0	0	0	0	0	0	0	0	0	0	1
		F	0	0	0	0	0	0	0	0	0	0	0	0
Q85	Phakomatoses, nec	M	0	0	0	0	0	0	0	0	0	0	0	0
		F	0	0	0	0	0	0	0	0	1	0	0	1
Q87	Other specified congenital malformation syndromes affecting multiple systems	M	0	0	0	0	0	0	0	0	0	0	0	0
		F	1	0	0	0	0	0	0	0	0	0	0	1
Q89	Other congenital malformations, nec	M	1	0	0	0	0	0	0	0	0	0	0	1
		F	0	0	0	0	0	0	0	0	0	0	0	0
Q90	Down's syndrome	M	0	0	0	0	0	1	0	0	0	0	0	1
		F	0	0	0	0	0	0	0	0	1	0	0	1
Q91	Edward's syndrome & Patau's syndrome	M	1	0	0	0	0	0	0	0	0	0	0	1
		F	3	0	0	0	0	0	0	0	0	0	0	3
<b>R00-R99</b>	<b>Symptoms, signs &amp; abnormal clinical &amp; laboratory findings nec</b>	<b>M</b>	<b>0</b>	<b>0</b>	<b>0</b>	<b>1</b>	<b>0</b>	<b>0</b>	<b>0</b>	<b>0</b>	<b>1</b>	<b>3</b>	<b>2</b>	<b>7</b>
		<b>F</b>	<b>0</b>	<b>0</b>	<b>0</b>	<b>0</b>	<b>0</b>	<b>0</b>	<b>0</b>	<b>0</b>	<b>0</b>	<b>3</b>	<b>5</b>	<b>8</b>
R17	Unspecified jaundice	M	0	0	0	0	0	0	0	0	0	1	0	1
		F	0	0	0	0	0	0	0	0	0	0	0	0
R19	Other symptoms & signs involving the digestive system & abdomen	M	0	0	0	0	0	0	0	0	1	0	0	1
		F	0	0	0	0	0	0	0	0	0	0	0	0
R53	Malaise & fatigue	M	0	0	0	0	0	0	0	0	0	1	1	2
		F	0	0	0	0	0	0	0	0	0	1	2	3

Table 15: Deaths by specific cause, age group and gender

ICD-10 Code	Cause of Death	sex	Age in Years										Total	
			<1	1-	5-	15-	25-	35-	45-	55-	65-	75-		85+
R54	Senility	M	0	0	0	0	0	0	0	0	0	0	1	1
		F	0	0	0	0	0	0	0	0	0	1	3	4
R99	Other ill-defined & unspecified causes of mortality	M	0	0	0	1	0	0	0	0	0	1	0	2
		F	0	0	0	0	0	0	0	0	0	1	0	1
<b>V01-Y98</b>	<b>External causes of morbidity &amp; mortality</b>	<b>M</b>	<b>1</b>	<b>0</b>	<b>0</b>	<b>10</b>	<b>7</b>	<b>9</b>	<b>10</b>	<b>6</b>	<b>6</b>	<b>12</b>	<b>6</b>	<b>67</b>
		<b>F</b>	<b>0</b>	<b>1</b>	<b>0</b>	<b>5</b>	<b>1</b>	<b>1</b>	<b>5</b>	<b>5</b>	<b>7</b>	<b>17</b>	<b>16</b>	<b>58</b>
V01	Pedestrian injured in collision with pedal cycle	M	0	0	0	0	0	0	0	0	0	0	0	0
		F	0	0	0	0	0	0	0	0	1	0	0	1
V03	Pedestrian injured in collision with car, pick-up truck or van	M	0	0	0	0	0	0	0	0	1	0	0	1
		F	0	0	0	0	0	0	0	0	1	0	0	1
V14	Pedal cyclist injured in collision with heavy transport vehicle or bus	M	0	0	0	0	0	0	1	0	0	0	0	1
		F	0	0	0	0	0	0	0	0	0	0	0	0
V21	Motorcycle rider injured in collision with pedal cycle	M	0	0	0	1	0	0	0	0	0	0	0	1
		F	0	0	0	0	0	0	0	0	0	0	0	0
V23	Motorcycle rider injured in collision with car, pick-up truck or van	M	0	0	0	0	1	0	0	0	0	0	0	1
		F	0	0	0	0	0	0	0	0	0	0	0	0
V27	Motorcycle rider injured in collision with fixed or stationary object	M	0	0	0	0	0	1	0	0	0	0	0	1
		F	0	0	0	0	0	0	0	0	0	0	0	0
V28	Motorcycle rider injured in noncollision transport accident	M	0	0	0	1	0	0	0	0	0	0	0	1
		F	0	0	0	0	0	0	0	0	0	0	0	0
V29	Motorcycle rider injured in other & unspecified transport accidents	M	0	0	0	0	0	1	0	0	0	0	0	1
		F	0	0	0	0	0	0	0	0	0	0	0	0
V44	Car occupant injured in collision with heavy transport vehicle or bus	M	0	0	0	0	0	0	0	1	0	0	0	1
		F	0	0	0	0	0	0	1	0	0	0	0	1
V47	Car occupant injured in collision with fixed or stationary object	M	0	0	0	1	1	0	0	0	0	0	0	2
		F	0	0	0	0	0	0	0	0	0	0	0	0
V57	Occupant of pick-up truck or van injured in collision with fixed or stationary object	M	0	0	0	2	0	0	0	0	0	0	0	2
		F	0	0	0	0	0	0	0	0	0	0	0	0

Table 15: Deaths by specific cause, age group and gender

ICD-10 Code	Cause of Death	sex	Age in Years										Total	
			<1	1-	5-	15-	25-	35-	45-	55-	65-	75-		85+
V94	Other & unspecified water transport accidents	M	0	0	0	0	0	1	0	0	0	0	0	1
		F	0	0	0	0	0	0	0	0	0	0	0	0
W01	Fall on same level from slipping, tripping & stumbling	M	0	0	0	0	0	0	0	0	0	2	0	2
		F	0	0	0	0	0	0	0	0	1	4	4	9
W06	Fall involving bed	M	0	0	0	0	0	0	0	0	0	0	0	0
		F	0	0	0	0	0	0	0	0	0	2	1	3
W07	Fall involving chair	M	0	0	0	0	0	0	0	0	0	1	0	1
		F	0	0	0	0	0	0	0	0	0	0	1	1
W08	Fall involving other furniture	M	0	0	0	0	0	0	0	0	0	1	1	2
		F	0	0	0	0	0	0	0	0	0	0	0	0
W10	Fall on & from stairs & steps	M	0	0	0	0	0	0	0	0	0	2	0	2
		F	0	0	0	0	0	0	0	0	2	0	1	3
W13	Fall from, out of or through building or structure	M	0	0	0	1	0	1	0	1	0	0	0	3
		F	0	0	0	0	0	0	0	0	0	0	0	0
W18	Other fall on same level	M	0	0	0	0	0	0	0	0	0	1	0	1
		F	0	0	0	0	0	0	0	0	0	0	1	1
W19	Unspecified fall	M	0	0	0	0	0	0	1	2	1	2	4	10
		F	0	0	0	0	0	0	0	0	2	7	6	15
W20	Struck by thrown, projected or falling object	M	0	0	0	0	0	0	1	0	0	0	0	1
		F	0	0	0	1	0	0	0	1	0	0	0	2
W23	Caught, crushed, jammed or pinched in or between objects	M	0	0	0	0	0	0	1	0	0	0	0	1
		F	0	0	0	0	0	0	0	0	0	0	0	0
W27	Contact with nonpowered hand tool	M	0	0	0	0	1	0	0	0	0	0	0	1
		F	0	0	0	0	0	0	0	0	0	0	0	0
W68	Drowning & submersion following fall into swimming-pool	M	0	0	0	0	0	0	0	0	0	0	0	0
		F	0	1	0	0	0	0	0	0	0	0	0	1
W70	Drowning & submersion following fall into natural water	M	0	0	0	0	0	1	0	0	0	0	0	1
		F	0	0	0	0	0	0	0	0	0	0	0	0
W78	Inhalation of gastric contents	M	0	0	0	0	0	0	0	0	1	0	0	1
		F	0	0	0	0	0	0	0	0	0	0	0	0

Table 15: Deaths by specific cause, age group and gender

ICD-10 Code	Cause of Death	sex	Age in Years											Total
			<1	1-	5-	15-	25-	35-	45-	55-	65-	75-	85+	
W79	Inhalation & ingestion of food causing obstruction of respiratory tract	M	0	0	0	0	0	1	0	0	1	0	0	2
		F	0	0	0	0	0	0	0	0	0	0	0	0
W80	Inhalation & ingestion of other objects causing obstruction of respiratory tract	M	1	0	0	0	0	0	0	0	0	0	0	1
		F	0	0	0	0	0	0	0	0	0	0	0	0
W85	Exposure to electric transmission lines	M	0	0	0	1	0	0	0	0	0	0	0	1
		F	0	0	0	0	0	0	0	0	0	0	0	0
W87	Exposure to unspecified electric current	M	0	0	0	1	0	0	0	0	0	0	0	1
		F	0	0	0	0	0	0	1	0	0	0	0	1
X01	Exposure to uncontrolled fire, not in building or structure	M	0	0	0	0	0	0	0	0	0	1	0	1
		F	0	0	0	0	0	0	0	0	0	0	0	0
X31	Exposure to excessive natural cold	M	0	0	0	0	0	0	0	0	0	0	1	1
		F	0	0	0	0	0	0	0	0	0	1	2	3
X42	Accidental poisoning by & exposure to narcotics & psychodysleptics nec	M	0	0	0	0	4	0	0	0	0	0	0	4
		F	0	0	0	1	0	0	0	0	0	0	0	1
X45	Accidental poisoning by & exposure to alcohol	M	0	0	0	0	0	0	1	0	0	0	0	1
		F	0	0	0	0	0	0	0	0	0	0	0	0
X61	Intentional self-poisoning by & exposure to antiepileptic, sedative hypnotic, antiparkinsonism & psychotropic drugs, nec	M	0	0	0	0	0	0	0	0	0	0	0	0
		F	0	0	0	0	0	0	0	1	0	0	0	1
X62	Intentional self-poisoning by & exposure to narcotics & psychodysleptics nec	M	0	0	0	0	0	0	0	0	1	0	0	1
		F	0	0	0	0	0	0	0	0	0	0	0	0
X70	Intentional self-harm by hanging, strangulation & suffocation	M	0	0	0	1	0	1	1	1	0	1	0	5
		F	0	0	0	1	0	0	1	1	0	1	0	4
X73	Intentional self-harm by rifle, shotgun & larger firearm discharge	M	0	0	0	0	0	0	0	1	0	0	0	1
		F	0	0	0	0	0	0	0	0	0	0	0	0
X74	Intentional self-harm by other & unspecified firearm discharge	M	0	0	0	1	0	0	1	0	0	0	0	2
		F	0	0	0	0	0	0	0	0	0	0	0	0

Table 15: Deaths by specific cause, age group and gender



Department of Health Information

ICD-10 Code	Cause of Death	sex	Age in Years										Total	
			<1	1-	5-	15-	25-	35-	45-	55-	65-	75-		85+
X78	Intentional self-harm by sharp object	M	0	0	0	0	0	1	0	0	0	0	0	1
		F	0	0	0	0	0	0	0	0	0	0	0	0
X80	Intentional self-harm by jumping from a high place	M	0	0	0	0	0	0	2	0	1	1	0	4
		F	0	0	0	1	0	1	2	0	0	1	0	5
X91	Assault by hanging, strangulation & suffocation	M	0	0	0	0	0	0	0	0	0	0	0	0
		F	0	0	0	0	0	0	0	1	0	0	0	1
X93	Assault by handgun discharge	M	0	0	0	0	0	1	0	0	0	0	0	1
		F	0	0	0	0	0	0	0	1	0	0	0	1
X94	Assault by rifle, shotgun & larger firearm discharge	M	0	0	0	0	0	0	0	0	0	0	0	0
		F	0	0	0	1	0	0	0	0	0	0	0	1
X95	Assault by other & unspecified firearm discharge	M	0	0	0	0	0	0	1	0	0	0	0	1
		F	0	0	0	0	0	0	0	0	0	0	0	0
X99	Assault by sharp object	M	0	0	0	0	0	0	0	0	0	0	0	0
		F	0	0	0	0	1	0	0	0	0	0	0	1
Y40	Systemic antibiotics	M	0	0	0	0	0	0	0	0	0	0	0	0
		F	0	0	0	0	0	0	0	0	0	1	0	1

Table 15: Deaths by specific cause, age group and gender

**Table 16: Deaths in non-residents (tourists) by gender, age group & cause of death**

ICD 10 code	Cause of death	sex	age groups				
			0-44	45-64	65-84	85+	Total
	<b>Total</b>	<b>T</b>	<b>9</b>	<b>20</b>	<b>39</b>	<b>5</b>	<b>73</b>
	<b>Male deaths</b>	<b>M</b>	<b>8</b>	<b>16</b>	<b>25</b>	<b>3</b>	<b>52</b>
	<b>Female deaths</b>	<b>F</b>	<b>1</b>	<b>4</b>	<b>14</b>	<b>2</b>	<b>21</b>
<b>A00-B99</b>	<b>Certain infectious &amp; parasitic diseases</b>	<b>M</b>	<b>0</b>	<b>0</b>	<b>0</b>	<b>0</b>	<b>0</b>
		<b>F</b>	<b>0</b>	<b>0</b>	<b>1</b>	<b>0</b>	<b>1</b>
A41	Other septicaemia	M	0	0	0	0	0
		F	0	0	1	0	1
<b>C00-D48</b>	<b>Neoplasms</b>	<b>M</b>	<b>0</b>	<b>1</b>	<b>4</b>	<b>0</b>	<b>5</b>
		<b>F</b>	<b>0</b>	<b>0</b>	<b>0</b>	<b>0</b>	<b>0</b>
C18	Malignant neoplasm of colon	M	0	1	1	0	2
		F	0	0	0	0	0
C34	Malignant neoplasm of bronchus & lung	M	0	0	1	0	1
		F	0	0	0	0	0
C44	Other malignant neoplasms of skin	M	0	0	1	0	1
		F	0	0	0	0	0
C95	Leukaemia of unspecified cell type	M	0	0	1	0	1
		F	0	0	0	0	0
<b>I00-I99</b>	<b>Diseases of the circulatory system</b>	<b>M</b>	<b>0</b>	<b>12</b>	<b>16</b>	<b>3</b>	<b>31</b>
		<b>F</b>	<b>0</b>	<b>3</b>	<b>10</b>	<b>1</b>	<b>14</b>
I05	Rheumatic mitral valve diseases	M	0	0	0	0	0
		F	0	0	1	0	1
I21	Acute myocardial infarction	M	0	7	4	2	13
		F	0	2	2	1	5
I25	Chronic ischaemic heart disease	M	0	4	8	0	12
		F	0	0	3	0	3
I26	Pulmonary embolism	M	0	0	0	0	0
		F	0	0	1	0	1
I50	Heart failure	M	0	0	0	0	0
		F	0	0	1	0	1

ICD 10 code	Cause of death	sex	age groups				
			0-44	45-64	65-84	85+	Total
I51	Complications & ill-defined descriptions of heart disease	M	0	0	1	0	1
		F	0	0	0	0	0
I61	Intracerebral haemorrhage	M	0	0	1	1	2
		F	0	0	0	0	0
I63	Cerebral infarction	M	0	0	0	0	0
		F	0	0	1	0	1
I64	Stroke, not specified as haemorrhage or infarction	M	0	0	1	0	1
		F	0	1	1	0	2
I71	Aortic aneurysm & dissection	M	0	1	1	0	2
		F	0	0	0	0	0
<b>J00-J99</b>	<b>Diseases of the respiratory system</b>	<b>M</b>	<b>0</b>	<b>0</b>	<b>2</b>	<b>0</b>	<b>2</b>
		<b>F</b>	<b>0</b>	<b>0</b>	<b>2</b>	<b>1</b>	<b>3</b>
J22	Unspecified acute lower respiratory infection	M	0	0	0	1	1
		F	0	0	0	0	0
J43	Emphysema	M	0	0	0	0	0
		F	0	0	1	0	1
J44	Other chronic obstructive pulmonary disease	M	0	0	1	0	1
		F	0	0	1	0	1
<b>K00-K93</b>	<b>Diseases of the digestive system</b>	<b>M</b>	<b>1</b>	<b>1</b>	<b>2</b>	<b>0</b>	<b>4</b>
		<b>F</b>	<b>0</b>	<b>0</b>	<b>0</b>	<b>0</b>	<b>0</b>
K26	Duodenal ulcer	M	0	0	1	0	1
		F	0	0	0	0	0
K70	Alcoholic liver disease	M	1	0	1	0	2
		F	0	0	0	0	0
K72	Hepatic failure, not elsewhere classified	M	0	1	0	0	1
		F	0	0	0	0	0
<b>N00-N99</b>	<b>Diseases of the genitourinary system</b>	<b>M</b>	<b>0</b>	<b>0</b>	<b>1</b>	<b>0</b>	<b>1</b>
		<b>F</b>	<b>0</b>	<b>0</b>	<b>0</b>	<b>0</b>	<b>0</b>
N39	Other disorders of urinary system	M	0	0	1	0	1
		F	0	0	0	0	0

Table 16: Deaths in non-residents (tourists) by gender, age group & cause of death

ICD 10 code	Cause of death	sex	age groups				
			0-44	45-64	65-84	85+	Total
<b>Q00-Q99</b>	<b>Congenital malformations, deformations &amp; chromosomal abnormalities</b>	<b>M</b>	<b>0</b>	<b>1</b>	<b>0</b>	<b>0</b>	<b>1</b>
		<b>F</b>	<b>0</b>	<b>0</b>	<b>0</b>	<b>0</b>	<b>0</b>
Q21	Congenital malformations of cardiac septa	M	0	1	0	0	1
		F	0	0	0	0	0
<b>V01-Y98</b>	<b>External causes of morbidity &amp; mortality</b>	<b>M</b>	<b>7</b>	<b>1</b>	<b>0</b>	<b>0</b>	<b>8</b>
		<b>F</b>	<b>1</b>	<b>1</b>	<b>1</b>	<b>0</b>	<b>3</b>
V27	Motorcycle rider injured in collision with fixed or stationary object	M	1	0	0	0	1
		F	0	0	0	0	0
V44	Car occupant injured in collision with heavy transport vehicle or bus	M	0	1	0	0	1
		F	0	0	0	0	0
W13	Fall from, out of or through building or structure	M	1	0	0	0	1
		F	0	0	0	0	0
W19	Unspecified fall	M	0	0	0	0	0
		F	0	0	1	0	1
W69	Drowning & submersion while in natural water	M	0	0	0	0	0
		F	0	1	0	0	1
W70	Drowning & submersion following fall into natural water	M	1	0	0	0	1
		F	0	0	0	0	0
W73	Other specified drowning & submersion	M	1	0	0	0	1
		F	0	0	0	0	0
X42	Accidental poisoning by & exposure to narcotics & psychodysleptics nec	M	1	0	0	0	1
		F	0	0	0	0	0
X80	Intentional self-harm by jumping from a height	M	1	0	0	0	1
		F	1	0	0	0	1
Y00	Assault by blunt object	M	1	0	0	0	1
		F	0	0	0	0	0

Table 16: Deaths in non-residents (tourists) by gender, age group &amp; cause of death

