

Tooth Injuries

Keep calm - to make sure you act quickly and do the right thing.
Contact a dentist immediately in every dental accident.

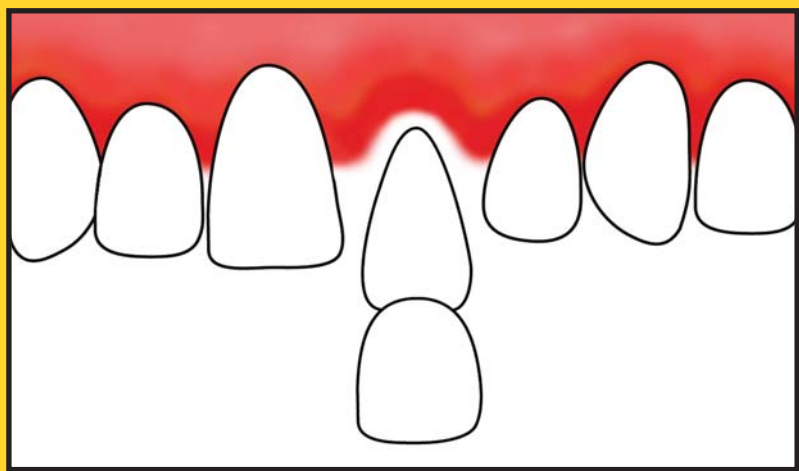
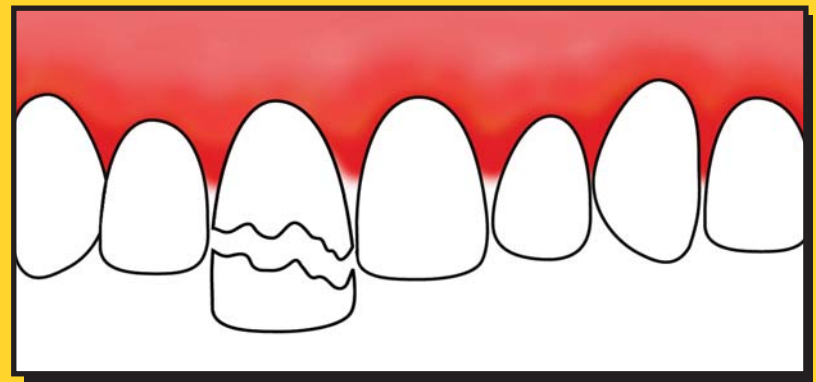


Loose tooth

If mild, it usually tightens up on its own.
Very loose or displaced teeth need to be seen by a dentist within **4 hours**.

Chipped tooth

Look for the broken tooth fragment and take it with you to the dentist **as soon as possible**.



Permanent tooth knocked out

Hold the tooth carefully by the top (crown), not by the pointed end (root).
Remove any debris by gently rinsing the tooth with water, milk or saliva.
Do not scrub the tooth or disinfect it.
Place the tooth by hand back into the socket.
Keep the tooth in place by asking the person to bite on a clean cloth.
The person should see the dentist for **immediate** treatment.



If you cannot put the tooth back in its socket

Do not let it dry out.
Place it in milk or between the cheek and gums until seen by a dentist.



Watch the clock!

Every minute a tooth is out of its socket means that it has less chance of survival. A tooth has the best chance of survival if replaced within 30 minutes.